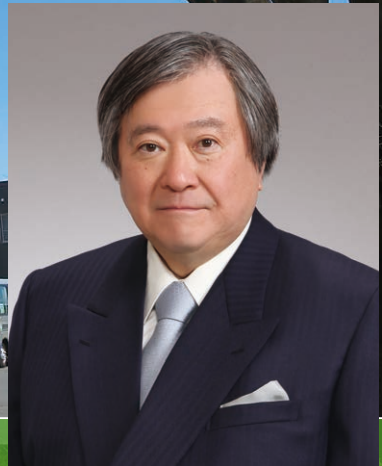




INTERNATIONAL UNIVERSITY OF HEALTH AND WELFARE

GUIDEBOOK 2026





TAKAGI Kuninori
M.D., Ph.D.
IUHW Chairman

Message from the Chairman

30 years since the opening of the university this year, we are moving to a new stage of leaps and bounds

International University of Health and Welfare, which opened in Otawara City, Tochigi Prefecture, in 1995 as Japan's first comprehensive university of health and welfare, celebrates its 30th anniversary this year.

With the founding spirit of "creating a society where we coexist in harmony", the university has set a major goal of improving the status of medical and welfare professionals and nurturing leaders in the medical and welfare field in Asia, and has been providing education by leading experts in medical and welfare fields since its opening. Currently, the university has 11 faculties, 28 departments and a graduate school on 5 campuses nationwide. Approximately 10,000 students are studying at the university, and it has produced about 37,000 excellent graduates to date. It boasts one of the highest national exam pass rates and employment rates, and has come to be regarded as one of the most successful private universities opened after the war.

One of the major features of our university is its state-of-the-art learning environment. Six affiliated hospitals and group-related facilities, positioned as clinical medical research centers, fully cooperate with education and research, providing an environment in which students can learn about "team medical care and team care".

About 1,000 students participate in overseas training every year to experience medical and welfare sites around the world. We also offer scholarships to international students, mainly from Asia, to train people who will become leaders in the medical and welfare fields in their home countries. This international approach to education is another feature of our university.

Our five campuses across the country make use of the characteristics of each region to train excellent medical and welfare professionals.

In the Tochigi region, centered on the Otawara Campus, where the university was founded, our group-related facilities are located on a vast site of about 500,000 m², the equivalent of 10 Tokyo Domes. The Otawara Campus is home to six medical and welfare facilities, including a disability support facility, a rehabilitation facility, the only child psychological treatment facility in Tochigi Prefecture, and a clinic. In addition, the Nasu-Shiobara area is home to the International University of Health and Welfare Hospital, a nursing home for the elderly, and a special nursing home where students can come into contact with the elderly and disabled, as well as welfare, sports, and cultural exchange facilities that can be used for training.

The Okawa Campus is adjacent to Takagi Hospital, which is the original hospital of the group and has a history of over 110 years, and is also linked to Yanagawa Rehabilitation Hospital, one of the largest in Japan, located in Yanagawa City, making it an ideal educational environment for training medical professionals to develop practical skills.

The Odawara Campus has a main school building adjacent to Odawara Station and a school building on castle grounds near the tourist attraction of Odawara Castle. It has a training system in close cooperation with the International University of Health and Welfare Atami Hospital.

Located in the heart of Tokyo, just a three-minute walk from Akasaka-mitsuke station, the Tokyo Akasaka Campus will develop education linking undergraduate and graduate schools and function as a hub for medical and welfare exchange.

The Narita Campus, located in the international city of Narita, has many international students, including 120 from the School of Medicine, and is integrated with the International University of Health and Welfare Narita Hospital, which aims to become a leading hospital in Asia, providing a global learning environment for students.

In April 2025, the Department of Medical Technology and Sciences, which will train Medical Laboratory Technician, opened at Otawara Campus. This is the 3rd department established, following the Okawa Campus and the Narita Campus, and the only department to train medical technologists at a four-year private university in the Tohoku region and Tochigi Prefecture.

In the future, we will continue to work with our affiliated hospitals and clinical medicine research centers to further enhance our education, clinical practice, and research, and will work to strengthen our functions as a comprehensive university of medical and welfare, and to train medical professionals who are in demand both at home and abroad.

Contents

5 Campuses	2	Active International Exchange	19-21
Messages.....	3	International Students.....	22
Principles and History	4	Japanese Language Program, Volunteer Activities.....	23
Features of IUHW.....	5-6	Graduate School.....	24
University Hospitals and Affiliated Facilities ...	7-8	University Campuses and Access	25-26
Campuses	9-12		
Faculty and Departments	13-18		

5 Campuses



Otawara Campus



Okawa Campus



Tokyo Akasaka Campus



Odawara Campus



Narita Campus

About International University of Health and Welfare (IUHW)

IUHW was founded in 1995 as the first comprehensive university of health and welfare in Japan to advance the social status of specialists in the field of health and welfare. Our goal is to train and educate future leaders in their respective fields, capable of responding to the advancement and specialization of health and welfare field with good judgment and intelligence. At the same time, we have been strengthening international relations and cooperation activities across the globe, especially with developing countries in Southeast Asia. Approximately 10,000 students currently study at 11 schools and 28 departments on 5 campuses located in Otawara City (Tochigi), Narita City (Chiba), Akasaka (Tokyo), Odawara City (Kanagawa), and Okawa City (Fukuoka).

Message from the President

Medical welfare professionals who are required in a diverse society

International University of Health and Welfare, which celebrates its 30th anniversary this year, has established the founding spirit of "aiming to realize a society where the ill, the disabled and the able-bodied can live together in mutual recognition", and has fulfilled its raison d'être as a place to acquire high culture and true medical professionalism for life in the field of medical welfare. In the 30 years since the university was founded, approximately 37,000 students have graduated from the university and are active in various specialized fields such as medical institutions, welfare facilities, educational facilities, and administrative agencies, and many of them hold leadership positions in these fields.

The founding spirit that still lives on in our graduates is also reflected in the unique educational characteristics of our university, which has one of the leading achievements in Japan in the field of rehabilitation education. This characteristic is clearly reflected in the Multi professional Teamwork in Healthcare where students form interdisciplinary teams and experience team medical care under the guidance of doctors and specialists in the field, and the Study of Overseas Health and Welfare course where students gain an international perspective by experiencing medical sites overseas.

What these programs have in common is diversity, which will become increasingly important in the future in a global society. In order for people with illnesses and disabilities, healthy people, people from various professions, and people from other countries with different cultural backgrounds to accept each other and live together, it is extremely important to adapt to new environments. At our university, we are committed to nurturing human resources who can accept diversity and demonstrate their expertise in all situations, including in the medical and welfare fields where collaboration between multiple professions is necessary.

To train medical professionals who are rich in humanity and have such advanced knowledge and skills, we invite leading experts and versatile instructors in each field to our teaching staff, and we have prepared a pioneering curriculum and learning environment, such as starting clinical training at an early stage. In particular, our university offers an extremely favorable learning environment, with clinical training opportunities at six affiliated hospitals, clinical medical research centers, and a variety of health and welfare institutions, including chronic care.

We hope that all students who will study at our university in the future will take full advantage of the advanced education and comprehensive learning environment that our university has cultivated over its history, and become medical and welfare professionals with a truly international outlook, playing an active role in a wide range of medical settings both in Japan and abroad.



Professor **SUZUKI Yasuhiro**

M.D., Ph.D.
President

Profile

Graduated from Keio University School of Medicine. Doctor of Medicine. Obtained two master's degrees (Master of Public Health, Master of Science) from the Harvard University Graduate School of Public Health in the United States. Served as Executive Director, the highest position next to Director-General of the World Health Organization (WHO) and Chief Medical & Global Health Officer of the Ministry of Health, Labor and Welfare. Became a professor at the International University of Health and Welfare Graduate School in January 2021, Vice President in March of the same year, and has been in his current position since April 2022. In December of the same year, he was appointed as Vice-Chair of the WHO Executive Board.

Message from the Dean, IUHW Graduate School

Cultivating advanced medical professionals in majors that meet the needs of society

The International University of Health and Welfare Graduate School was established in 1999 with the hope of cultivating advanced medical professionals who are expected to play a leading role in the fields of health, medicine, and welfare. It is a unique graduate school unlike any other, which has taken care to provide a sufficient research environment for working adults. Currently, in addition to graduate students who entered the school immediately after graduating from university, many of our graduate students are adults who are already working in the medical and welfare fields.

Since its foundation, our graduate school has established new majors focusing on the medical field. These include the Reproductive Embryology field, which is one of the few in the country; the Health and Welfare Journalism field, which is probably the first in Japan; the Midwifery field, which is studied at the graduate school rather than at the undergraduate level; the Clinical Psychology major designated by the Foundation of the Japanese Certification Board for Clinical Psychologists; the Nurse Practitioner field, which is the first in the country; the Medical Administration field and the Human Health-related MBA (h-MBA) course; the Advanced Care Network Development field, which has raised nursing care to an academic level; and the Education and Management in Health and Welfare field, which aims to train people who can be active as educators and managers in the medical and welfare fields. In 2024, we will launch a Public Health major (professional degree course), further enhancing the education and research environment so that we can function as an international medical exchange hub.

One of our major features is our dynamic evolution to meet the needs of society. In addition, our university has six affiliated hospitals with comprehensive educational functions, as well as numerous affiliated medical and welfare facilities operated by group corporations, such as Sanno Hospital and Sanno Medical Center in Tokyo, Takagi Hospital, Fukuoka Sanno Hospital, Fukuoka Central Hospital, and Yanagawa Rehabilitation Hospital in Kyushu, all of which serve as clinical training facilities for graduate students.

In addition, we have a wide variety of affiliated facilities such as the Life-long Learning Center, Nogizaka School, Kyushu Life-long Education Center, and Social Security Policy Research Institute, which support lifelong learning and career advancement, providing graduate students with a wide range of options for their education and research.

With a practical education and research environment, our graduate school hopes to continue to promote comprehensive graduate education and research in the fields of health, medicine, and welfare, while keeping sight of international perspectives. We appreciate your continued support.



YATOMI Yutaka

M.D., Ph.D.
Dean, IUHW Graduate School

Profile

Graduated from the Faculty of Medicine at the University of Tokyo. Doctor of Medicine. Professor at the Graduate School of Medicine at the University of Tokyo since 2005. Served as advisor to the president of the University of Tokyo and education and research council member, vice dean of the Graduate School of Medicine and vice dean of the Faculty of Medicine, and vice director of the University of Tokyo Hospital. In 2023, he was appointed professor emeritus at the University of Tokyo. He also served as president of the Japanese Society of Internal Medicine, the Japanese Society of Laboratory Medicine, the Japanese Society of Medical Instrumentation, and the Japanese Society of Laboratory Hematology.

The Principles and Educational Goals of International University of Health and Welfare (IUHW)

3

Fundamental Principles of IUHW

University focused on well-balanced individuals with a solid sense of humanity

University strongly connected to and fully open to the community

University directed towards the attainment of global standard

7

Educational Principles of IUHW

Personality Development

Expertise

Inter-profession

Information Science and Technology

Internationality

Freedom of Thought

Innovative University Management

History of IUHW

1995	APR	Establishment of International University of Health and Welfare (Otagawa City, Tochigi)
		Establishment of School of Health
1997	APR	Establishment of School of Health and Welfare
	MAY	Opening of IUHW Clinic
1998	OCT	Establishment of International Research Institute of Health and Welfare
1999	APR	Establishment of Master's Program in Health Sciences
2001	APR	Establishment of Doctoral Program in Health Sciences, and Master's Programs in Health and Welfare and in Health Service Management
		Establishment of Satellite Campuses for Graduate School
2002	JUL	Opening of IUHW Atami Hospital
2005	MAR	Opening of IUHW Mita Hospital
	APR	Establishment of School of Pharmacy at Otagawa and School of Rehabilitation Sciences (Okawa City, Fukuoka)
2006	APR	Establishment of School of Health Sciences at Odawara (Odawara City, Kanagawa)
2007	FEB	International Health and Welfare Hospital renamed to IUHW Hospital
	APR	School of Health renamed to School of Health Sciences
		School of Rehabilitation Sciences renamed to School of Rehabilitation Sciences at Fukuoka
		Establishment of the Master's Program in Clinical Psychology
2009	APR	Establishment of School of Nursing at Fukuoka (Fukuoka City, Fukuoka)
		Unification of two departments in School of Health and Welfare into new Department of Social Services and Healthcare Management
		Establishment of Master's Programs in Pharmaceutical Sciences and in Biosis-pharmacy (Presently renamed to Biopharmaceutical Science)
		Opening of IUHW Shioya Hospital
		Opening of IUHW Shioya Nursing College
2011	JAN	Opening of IUHW Nasu Seminar House
2012	FEB	Opening of IUHW Radiation Disaster Control Research Center
	APR	Establishment of Doctoral Program in Medical and Biopharmaceutical Science in Graduate School of Pharmacy
	AUG	Opening of Yufuin Seminar House and Amity Yufu-kogen

2013	APR	School of Rehabilitation Sciences at Fukuoka renamed to School of Health Sciences at Fukuoka
		Establishment of Department of Medical Technology and Sciences at Okawa
		Relocation of School of Nursing at Fukuoka to Seaside Momochi area in Sawara-ku, Fukuoka City
2015	JUN	Opening of Japanese Language Program at Otagawa
2016	APR	Establishment of School of Nursing and School of Health Sciences at Narita (Narita City, Chiba)
2017	APR	Establishment of School of Medicine at Narita
	SEP	Kaken Hospital renamed to IUHW Ichikawa Hospital
2018	APR	Establishment of School of Psychology and Healthcare Management at Akasaka (Minato Ward, Tokyo)
		Establishment of Graduate School of Medicine (Doctoral Program) and Graduate School of Public Health (Master's Program)
2019	APR	Establishment of IUHW Japanese Language Program at Okawa
2020	MAR	Opening of IUHW Narita Hospital (Narita City, Chiba)
2020	APR	Establishment of Department of Pharmaceutical Sciences at Okawa
		Establishment of Department of Radiological Sciences/Health Sciences at Narita
		Completion of Building W at Tokyo Akasaka
2021	APR	Fukuoka School of Nursing at Fukuoka Campus transferred to Fukuoka International University of Health and Welfare
		Establishment of Department of Clinical Engineering: Special Advanced Course at Narita
2023	APR	Establishment of Department of Nursing in School of Health Sciences at Okawa
		Establishment of Department of Care Worker: Special Advanced Course at Narita
2024	APR	Establishment of Department of Pharmaceutical Sciences at Narita
		Establishment of Graduate School of Public Health (Professional Degree Program)
2025	APR	Establishment of Department of Medical Technology and Sciences at Otagawa

Features of IUHW

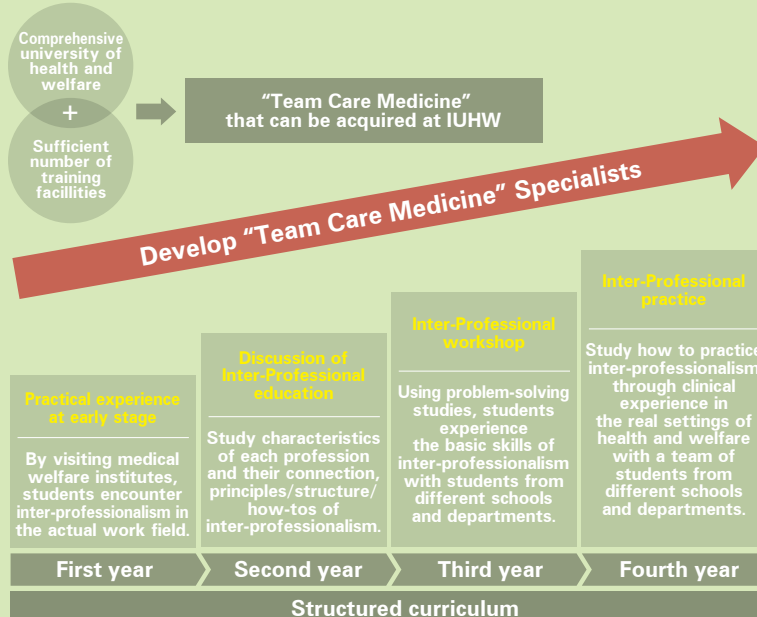


Inter-Professional Education (IPE)

We offer “Team Care Medicine,” where different health and welfare specialists provide medical treatment and care to each patient.

With various types of health and welfare institutions, IUHW provides Inter-Professional Education (IPE) where students learn “Team Care Medicine,” indispensable in the field of health and welfare over the coming years.

The IPE consists of four steps. Practical training in the fourth year will be conducted at a wide range of IHW group affiliated institutions, including six university hospitals. IUHW, as a comprehensive university, accepts students who aspire to become various types of medical specialists. It offers a unique curriculum where students can acquire “Team Care Medicine” through experience at the undergraduate level.



Employment Rate

Our university achieves a 100% employment rate every year.

We join our students’ efforts as they consider how to move forward and how to build up their future careers as members of society and as medical and welfare professionals. We send them off to employment destinations where they can make the most of their individual strengths.

Support offered by the faculty

We have an employment support system in place with homeroom teachers, tutors, and seminar instructors. Through individual consultations, we strengthen students’ confidence as professionals. Our aim is to work together with students to find employment that matches their hopes, personality, and characteristics, and provide detailed support for securing employment, while making full use of the faculty's extensive information network and alumni network. In addition, we invite alumni who are active on the front lines of their careers to give lectures and hold social events to help students visualize their future and raise their career awareness.

Support by the Career Support Center

The Career Support Center provides a variety of career support programs, including job information, guidance, and seminars to prepare for employment examinations, to support students from the time they are in school until after graduation. Resident career consultants provide friendly support so that each student can realize his or her desired career path. The newly introduced job placement support system allows students to view not only job offer information but also real exam results of their seniors on the web.



Various Scholarships

International University of Health and Welfare has established a number of scholarship programs unique to the university. Since its establishment, IUHW has aimed to nurture professionals in the fields of medicine and welfare who will become leaders in Asian countries, and has a full range of scholarship programs for international students.

IUHW Scholarship Program

Established in 2001, the IUHW Scholarship Program is a unique scholarship system that covers the full amount of tuition and other expenses for specially selected international students from Asia in order to contribute to the development of human resources who will play leading roles in the medical and welfare fields in Asian countries.

Scholarship for International Students in the School of Medicine

The School of Medicine has established a special scholarship system for international students from the School of Medicine to accept outstanding international students. The School of Medicine has concluded memorandums of understanding with governments and universities in seven countries: Vietnam, Mongolia, Myanmar, Indonesia, Laos, Cambodia, and Bhutan. The scholarship covers recipients’ entrance fees, tuition, textbooks, and living expenses for six years until graduation from medical school. The purpose of the scholarship is to contribute to the development of the healthcare field in their home countries after the international students obtain a medical license in Japan and gain clinical experience at hospitals affiliated with the university or other institutions.



National Examination Pass Rate

The International University of Health and Welfare maintains one of the highest pass rates in Japan each year for national certification examinations in various fields, such as care work, optometry, physical therapy, and occupational therapy.

The university has achieved this high success rate by providing thorough preparation for the national examinations. The National Examination Preparation Committee provides detailed support to each student, including preparatory lectures, tutorials, and mock exams.

About the National Medical Examination

The third class of students from the School of Medicine graduated in March 2025. In terms of the pass rate of the National Medical Licensing Examination, all the examinees in the third class passed, achieved a 100% pass rate, and ranked first out of 82 medical universities nationwide in terms of the total number of graduates and new graduates from private universities. In addition, we boast a large number of students who have passed the United States Medical Licensing Examination (USMLE) in both the basic and clinical medicine fields, ranking first in the country.

The School of Medicine has created a rich international learning environment, with one out of every seven students being an international student, which is unparalleled among medical schools in Japan. The school provides innovative and unprecedented medical education, including medical classes in English, 84 weeks of clinical practice (including overseas clinical practice), a spiral integrated curriculum, and clinical clerkships.

Pass rate of national examinations in 2024



* Based on Ministry of Health, Labor and Welfare data. The pass rate is the rate for new graduates out of all test takers. For doctors, the pass rate includes those who have graduated. The national pass rate for care workers is the combined pass rate of all care workers training facilities (universities and vocational schools).

University Hospitals & Affiliated Facilities

IUHW group has more than 60 medical and welfare facilities including six university hospitals and Sanno Hospital in Tokyo. Those facilities provide valuable opportunities for clinical training for students to develop their expertise.

Students will experience “Team Care Medicine” in clinical practice and study advanced skills with state-of-the-art medical devices. This is one of the most unique features of IUHW as a university with various facilities for clinical training. In addition, as many graduates work at IUHW university hospitals and affiliated facilities, students can enjoy OJT from their seniors in a caring atmosphere.

IUHW Narita Hospital/Chiba

IUHW Narita hospital with international features was established with 642 beds on 105,513m² architectural area. At the hospital, physicians and medical staff with a good command of foreign languages are assigned. The hospital aims to be a global standard hub hospital by providing multiple language services, religious meals, spaces for religious purposes, excellent facilities, as well as cutting-edge medical services and equipment. Featuring centers, including the International Remote Diagnostic Center and the International Clinical Center for Infectious Diseases, aim to act as bases for collaboration with overseas universities and medical institutions.

Furthermore, the Center for Preventative Medicine, featuring swimming pools, a gym, and other facilities, provides a variety of health checkup options.



IUHW Hospital/Tochigi

Number of beds: 449

IUHW Hospital is a foundation hospital. It is located at the northern region of Tochigi and designated as an emergency care and an emergency pediatric hospital.



IUHW Shioya Hospital/Tochigi

Number of beds: 199

IUHW Shioya Hospital is a regional core hospital. It is designated as an emergency care hospital and a core cancer treatment hospital in Tochigi.



IUHW Ichikawa Hospital/Chiba

Number of beds: 260

In September 2017, “Kaken Hospital” became “IUHW Ichikawa Hospital.” It supports treatment in a wide range of fields, notable the orthopedic surgery department, rehabilitation, and so on.



IUHW Mita Hospital/Tokyo

Number of beds: 291

IUHW Mita Hospital is designated as an emergency care hospital and a regional cancer hospital in Tokyo.



JCI-Accredited
Organization
(2015–2021)



IUHW Atami Hospital/Shizuoka

Number of beds: 269

Overlooking the ocean, IUHW Atami Hospital serving eastern Shizuoka and western Kanagawa is a foundation hospital. It is designated as an emergency care hospital and a regional cancer hospital in Shizuoka.



Tochigi Area



IUHW Clinic (Speech and Hearing Center/Health Care Center)



Short-term treatment facility for emotionally disturbed children "Nasu Kodomorie"



Special Nursing Home for the Elderly "Tochinomi-so"



Certified Children Center "IUHW Kanemaru Kodomo-en"



IUHW Rehabilitation Center ("Nasu Rehabilitation House" and "Support House Nasu")



Integrated Facility for Medical and Long-term care, Care Facility for the Elderly "Maronie-en"



Nishinasuno General Home Care Center



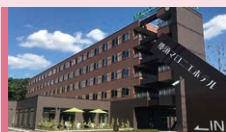
Special Nursing Home for the Elderly "Otagawa Kazahana-en"



Otagawa General Home Care Center



Shioya General Home Care Center



Nasu Marronnier Hotel



"IUHW Nasu Seminar House"

Tokyo Area



Sanno Hospital
Sanno Birth Center



Sanno Medical Center



Akasaka Sanno Medical Center (Tokyo Akasaka Campus)
Akasaka Sanno Sick Child Daycare Center
Akasaka Sanno Nursery School



Special Nursing Home for the Elderly/Support Facility for People with Disabilities "Shinjuku Keyaki-en"

Oita Area



Yufuin Seminar House/Amity Yufukogen

Fukuoka Area



Takagi Hospital



Fukuoka Sanno Hospital



Yanagawa Rehabilitation Hospital



Fukuoka Central Hospital



Mizuma Kohokai Hospital



Care Facility for the Elderly "Suigo-en"



Ariake General Care Center



Yanagawa Institute for Developmental Disabilities



Home for the Aged with moderate fee "Okawa Care House"



Special Nursing Home for the Elderly "Komorebi-en"



Seaside Hotel TWINS MOMOCHI



Okawa Community Plaza

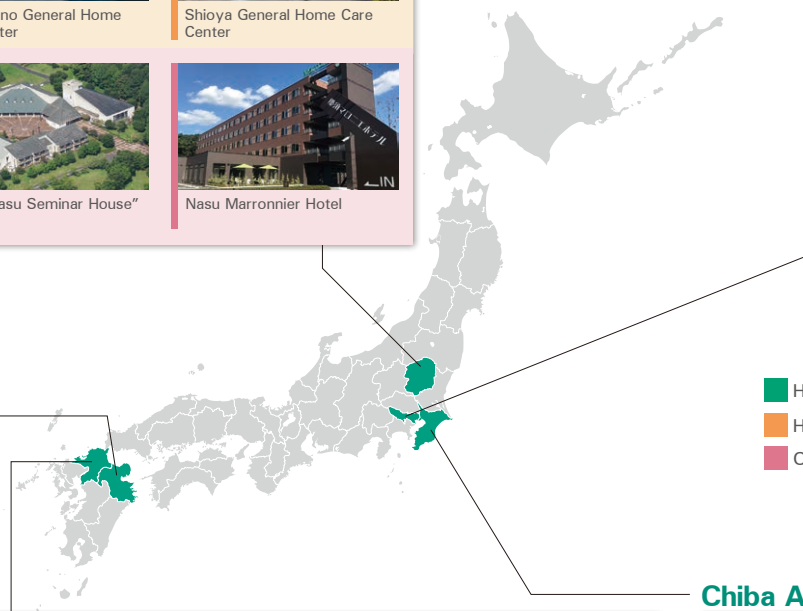
Chiba Area



Narita Rehabilitation Hospital



IUHW Narita Geriatric Medical Welfare Center



- Hospitals and Clinics
- Health and Welfare Facilities
- Others

Nasu Seminar House (Nasushiobara, Tochigi)

Facility for practical and exercise training, research activities and club activities for students and faculty members
138 guest rooms, conference rooms, meeting rooms, gymnasium, play ground, dining room, bathroom

Yufuin Seminar House (Yufuin, Oita)

Facility for practical and exercise training, research activities for students and faculty members.
63 guest rooms (all private rooms), conference rooms, meeting rooms, lounge, dining room, bathroom

Seaside Hotel TWINS MOMOCHI (Fukuoka)

198 guest rooms

Okawa Riverside Hotel (Okawa, Fukuoka)

62 guest rooms

Nasu Marronnier Hotel (Nasushiobara, Tochigi)

113 guest rooms

Narita Campus Dormitory "Narita International House" (Narita, Chiba)

216 all private rooms

Okawa Community Plaza (Okawa, Fukuoka)

Composite for culture and medical welfare
Bookstore, Certified Center for Early Childhood Education and Care, Home care support clinic, Ambulatory Rehabilitation, Theater

Campuses

(): Admission Quota

Otawara Campus (Otawara City, Tochigi)

School of Health Sciences

Department of Nursing (115)
Department of Physical Therapy (100)
Department of Occupational Therapy (80)
Department of Speech and Hearing Sciences (80)
Department of Orthoptics and Visual Sciences (50)
Department of Medical Technology and Sciences (80)
Department of Radiological Sciences (110)

School of Health and Welfare

Department of Social Services and Healthcare Management (140)

School of Pharmacy

Department of Pharmaceutical Sciences (180)
[6-year curriculum]

Narita Campus (Narita City, Chiba)

School of Medicine

Faculty of Medicine (140)

School of Nursing at Narita

Department of Nursing (100)

School of Pharmacy at Narita

Department of Pharmaceutical Sciences (120) [6-year curriculum]

Department of Care Worker: Special Advanced Course (40)

School of Health Sciences at Narita

Department of Physical Therapy (80)
Department of Occupational Therapy (40)
Department of Speech and Hearing Sciences (40)
Department of Medical Technology and Sciences (80)
Department of Radiological Sciences (50)

Tokyo Akasaka Campus (Minato Ward, Tokyo)

School of Psychology and Healthcare Management at Akasaka

Department of Psychology (60)
Department of Healthcare Management (60)

Odawara Campus (Odawara City, Kanagawa)

School of Health Sciences at Odawara

Department of Nursing (80)
Department of Physical Therapy (80)
Department of Occupational Therapy (40)

Okawa Campus (Okawa City, Fukuoka)

School of Health Sciences at Fukuoka

Department of Nursing (60)
Department of Physical Therapy (50)
Department of Occupational Therapy (30)
Department of Speech and Hearing Sciences*¹
Department of Medical Technology and Sciences (80)

School of Pharmacy at Fukuoka

Department of Pharmaceutical Sciences (120)
[6-year curriculum]

Graduate School

Health and Welfare Sciences [Master's Program]
[Doctoral Program]
Pharmacy [Doctoral Program – 4 years]
Pharmaceutical Sciences [Master's Program]
Medicine [Doctoral Program – 4 years]
Public Health [Professional Degree Program]

Japanese Language Program (JLP)

*¹ Recruitment ceases from 2023

Otawara Campus

2600-1 Kitakanemaru, Otawara City, Tochigi 324-8501
Tel.: +81-287-24-3200
E-mail: nyushi@iuhw.ac.jp



Just 70 minutes from Tokyo on Tohoku Shinkansen, the closest train station to the campus is Nasushiobara. The vast campus of over 260,000m² has an on-site healthcare clinic and other medical facilities.

Education, medical care, and welfare are all provided on campus. This unique setting gives students frequent opportunities to care for the elderly and people with disabilities nurturing a compassionate approach toward others which is essential for medical professionals.



▲Hunter Mountain Shiobara Ski Resort



▲Kurobane Hot Spring

Narita Campus

4-3 Kozunomori, Narita City, Chiba 286-8686
Tel.: +81-476-20-7810
E-mail: admission@iuhw.ac.jp



The School of Nursing and the School of Health Sciences at Narita Campus were opened in 2016. The School of Medicine was opened in 2017, and the School of Pharmacy at Narita was opened in 2024. Conveniently located right in front of Kozunomori Station on Keisei Honsen line, students are able to commute from Tokyo and neighboring cities. The campus is set in a quiet environment surrounded by nature with easy access to commercial facilities, such as shopping malls, restaurants, and convenience stores.



▲Narita International Airport
©NARITA INTERNATIONAL AIRPORT CORPORATION



▲Naritasan Shinshoji Temple
©Naritasan Shinshoji Temple

Tokyo Akasaka Campus

4-1-26 Akasaka, Minato Ward, Tokyo 107-8402
Tel.: +81-3-5574-3903
E-mail: akasaka-nyushi@iuhw.ac.jp



Tokyo Akasaka Campus opened in April 2018 on the site of the former Akasaka Elementary School in Minato Ward, Tokyo. Conveniently located a three-minute walk from Tokyo Metro Akasaka-mitsuke Station, the area is home to various facilities that epitomize central Tokyo, including the National Diet Building, television stations, and large-scale commercial complexes. The campus has facilities such as Akasaka Hall and Lifelong Learning Center, which can also be used by the local community. IUHW aims to become a hub for the community and for the international exchange and interaction.



▲Tokyo Tower



▲Hikawa Festival
©Akasaka Hikawa Parade Float Preservation Society

Odawara Campus

1-2-25 Shiroyama, Odawara City, Kanagawa 250-8588
Tel.: +81-465-21-0361
E-mail: od-nyushi@iuhw.ac.jp



Odawara Campus is right beside Odawara Station, where several different railway lines are running in. With easy access from neighboring cities, the campus is only 35 minutes away from Tokyo Station by Shinkansen, making it convenient for students to commute from out of town. Odawara Campus is an ideal environment to study. Furthermore, Jonai school building opened in March 2016.



▲Odawara Castle



▲Lake Ashinoko

Okawa Campus

137-1 Enokizu, Okawa City, Fukuoka 831-8501
 Tel.: +81-944-89-2100
 E-mail: kyushu-nyushi@iuhw.ac.jp

In the southern area of Fukuoka Prefecture, Okawa Campus in Okawa city flourishes with the gifts of nature from Ariake Sea and Chikugo River. The rich natural surrounding provides students an ideal environment to study. The campus is attached to Takagi Hospital, an IUHW-affiliated facility, therefore, students can learn from health and welfare experts with advanced knowledge and skills.



▲Chikugo River Vertical-Lift Bridge



▲Furogu Shrine

Faculty and Departments

Faculty of Medicine

Narita Campus

Fostering international medical professionals with an enrollment capacity of 140 students

First medical school in Japan to have a high ratio of foreign students (20 out of 140) in one grade. Of the 6 years of study, the first two will be taught mainly in English. From the 3rd year to graduation, classes will be focused on fostering clinical abilities. over 84 weeks of clinical clerkship will take place from the 4th year at institutions, not only IUHW university hospitals, but other group institutions. All students will undergo over 4 weeks of clinical practice overseas in the final year of their study. To bring distinction as a comprehensive university of health and welfare, our curricula feature "Inter-Professional Education." Students from different schools gather to experience and actually get acquainted with "Team Care Medicine."



Department of Pharmaceutical Sciences

Otawara Campus

Narita Campus

Okawa Campus

We educate top-class medical professionals devoted to "Team Care Medicine"

Our program offers trainings not only at on-campus facilities, but also at IUHW hospitals and affiliated hospitals which provide students with great practical experience from clinical training in Year 5. These trainings prepare students with the flexibility to demonstrate their abilities in "Team Care Medicine" and enable them to become top-class pharmacists.

National License

- Pharmacist

Work Settings

- Hospitals/Clinics
- Pharmacies
- Research and development section in pharmaceutical companies
- Administrative agency
- Educational/Research institutions



Department of Nursing

Otawara Campus

Narita Campus

Odawara Campus

Okawa Campus

We prepare nursing professionals with profound knowledge, skills, and compassion

Nurses play diverse roles in the constantly changing scenes of advanced medical care. As members of "Team Care Medicine," we train nurses/public health nurses with solid knowledge and skills, equip them with the ability to make accurate judgements and nurture a profound caring heart.

National Licenses

- Nursing License
- Public Health Nurse

Work Settings

- Hospitals/Clinics
- Visiting nurse stations
- Nursing homes/Elderly care facilities
- Public offices such as health centers
- Educational/Research institutions
- Airport (quarantine)
- Private companies



Department of Physical Therapy

Otawara Campus

Narita Campus

Odawara Campus

Okawa Campus

We prepare rehabilitation professionals of the next generation with highest standard medical knowledge and skills

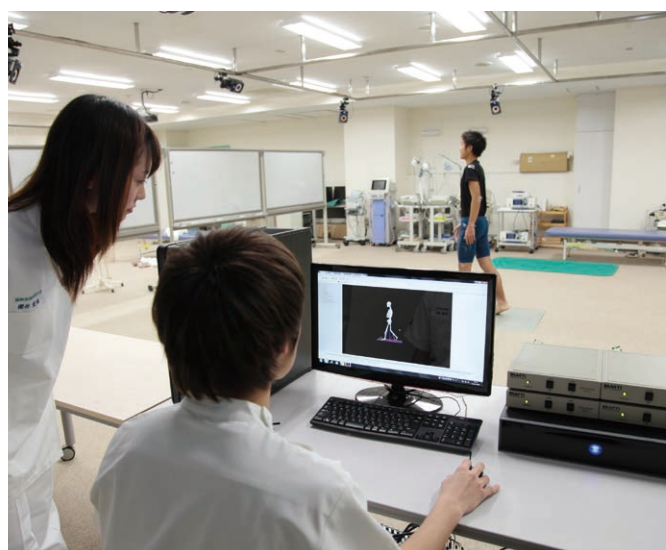
The job of physical therapists is to offer knowledge and skills in improving the QOL (quality of life) of patients with disabilities. The career path of physical therapists has expanded from health and welfare, emergency medicine, sports, and various other fields. Our program enhances knowledge, skills, and communication abilities, and train physical therapists with a caring heart.

National License

- Physical Therapist

Work Settings

- Hospitals/Clinics
- Public offices such as health centers
- Rehabilitation centers
- Nursing homes/Elderly welfare facilities
- Medical equipment industry
- Health promoting centers
- Educational/Research institutions



Department of Occupational Therapy

Otawara Campus

Narita Campus

Odawara Campus

Okawa Campus

We train experts who assist people with disabilities to participate in everyday life activities

Occupational therapists aim to assist people to enhance their ability and engage in a self-reliant social life. Effort is put into performing daily life activities the client needs or hopes for. Our program provides students with the expertise in becoming specialists in the body and soul through clinical training.

National License

- Occupational Therapist

Work Settings

- Hospitals/Clinics
- Public offices such as health centers
- Rehabilitation centers
- Nursing homes/Elderly welfare facilities
- Nurseries/Children's facilities
- Special schools for children with disabilities



Department of Speech and Hearing Sciences

Otawara Campus

Narita Campus

Okawa Campus

We prepare students of the next generation to diagnose and treat biological and environmental speech/hearing-related problems and swallowing disorders

Speech therapists provide professional assistance using their specialized knowledge and skills to clients with disabilities in daily activities such as communication and eating. Our program offers top-quality rehabilitation skills and we aim to educate specialists with high professionalism and a service-oriented approach.

National License

- Speech Therapist

Work Settings

- Hospitals/Clinics
- Public offices such as welfare centers and rehabilitation centers
- Nursing homes/Elderly welfare facilities
- Special support education schools/ facilities for the disabled
- Research scientists in the field of speech and language science/communication disorders



Department of Orthoptics and Visual Sciences

Otawara Campus

We provide latest ophthalmic medical treatment using professional knowledge and skills

As ophthalmic medicine becomes highly advanced, training experts in this field also becomes crucial. Our program focuses on clinical training which not only refines individual skills but enriches professionalism through collaborative work in "Team Care Medicine." Students should aim to become comprehensive healthcare professionals who can convey the joy of "seeing."

National License

- Certified Orthoptist

Work Settings

- Hospitals/Clinics
- Rehabilitation centers
- Ophthalmological clinics
- Health administration facilities
- Medical industry and medical equipment manufacturers
- Educational/Research institutions



Department of Radiological Sciences

Otawara Campus

Narita Campus

We train our radiological technologists systematically from basic to highly advanced technology which enables them to fully promote advanced medicine

The department uses educational devices such as medical image diagnosis apparatus, radiation therapy equipment, and various other equipment which are essential in the clinical scene. Our program offers clinical training at the IUHW university hospitals and other facilities, differentiating our university from other schools.

National Licenses

- Radiological Technologist
- Radiation Protection Supervisor

Work Settings

- Hospitals/Clinics
- Health screening centers
- Medical administration facilities
- Medical industry and medical equipment manufacturers
- Educational/Research institutions



Department of Medical Technology and Sciences

Otawara Campus

Narita Campus

Okawa Campus

We educate medical technologists of the next generation

Medical technologists play major roles in the decision-making of the treatment method for patients, conducting various examinations such as electrocardiograms, brain waves, blood tests, and others. Our program focuses on training experts capable of adapting to the diversification of medical services and advancement of examination methods, equipping them with both basic information and up-to-date technology essential in the present medical scene.

National License

- Medical Technologist

Work Settings

- Hospitals/Clinics
- Public offices such as health centers
- Private inspection institutes
- Pharmaceutical companies
- Medical equipment manufactures/related companies
- Scientific investigation section of police
- Civil service (specializing in sanitation)



Department of Social Services and Healthcare Management

Otawara Campus

We train professionals able to comprehensively support health and welfare

Japan has one of the longest life expectancies in the world. In order for people to live healthy and quality lives, experts with knowledge both on health and welfare are in high demand. Additionally, management skills are also essential to play central roles in practical health and welfare. Although there are many colleges and vocational schools focusing on social welfare and medical office work skills, our program trains professionals with knowledge in three different but related fields: medicine, welfare, and management.

National Licenses

- Certified Care Worker
- Certified Social Worker
- Psychiatric Social Worker

Work Settings

- Social welfare institutions/administration/service agencies
- Home care service facilities
- Consulting work in welfare institutions for the elderly, the handicapped, and children
- Welfare organizations
- Consulting work in social rehabilitation facilities
- Consulting work in companies, schools, and judiciary agencies



Department of Psychology

Tokyo Akasaka Campus

Fostering specialists in mental health care which is important in a stressful society by education that emphasizes in “team-based clinical” approach

Mental health care is becoming increasingly important in the workplace, at schools, in the home and in medical institutions. Leveraging our special characteristics as a comprehensive health and welfare university, the Department of Psychology trains psychologists with strong clinical skills, who are capable of playing a central role in the mental health care through the education that focuses on a team-based clinical approach to counseling in cooperation with other specialist fields.

National License

- Licensed Psychologist (Certified Psychologist)

Work Settings

- In the health and welfare field
- School counselor
- Family court probation officer
- Financial institution
- Manufacturer
- Media
- Service industry, etc.



Department of Healthcare Management

Tokyo Akasaka Campus

Fostering specialists who can enhance the “quality of medicine” by utilizing IT data in the medical management of new era

Medicine has entered a new era with the evolving artificial intelligence (AI) and utilization of big data. The Department of Healthcare Management trains specialists in health and welfare management who can support the high-quality, safe medicine, and the stable management of hospitals by accurately analyzing and utilizing IT information and data, through the education that focuses on practical affairs, building on the track record of the Department of Social Services and Healthcare Management at Otawara Campus which has produced many health information managers.

License

- Health Information Manager

Work Settings

- Administrative professionals in a medical institution
- Healthcare industry
- Financial institution
- Consulting firm
- Construction company, etc.



Active International Exchange



Overseas Partner Universities and Institutions

IUHW has signed partnership agreements with 49 institutions in 25 countries/regions (as of April 2025).

Department of International Affairs and International Centers of IUHW plan and operate international projects and collect relevant overseas information. We also manage a variety of international exchange activities such as accepting short-term trainees from China and other countries, and provide overseas training courses for IUHW students.

	Country	University/Institution
University	Taiwan	Yuanpei University of Medical Technology
	Thailand	Faculty of Public Health, Mahidol University
		Christian University of Thailand
	USA	University of Hawai'i Kapi'olani Community College
		University of Pittsburgh School of Medicine
	China	Capital Medical University, School of Rehabilitation Medicine
		University of Chinese Academy of Sciences
		Peking University Health Science Center
	Korea	Konyang University
		Inje University
		Daegu Haany University
		Eulji University
	Myanmar	University of Medicine 1, Yangon
		University of Medical Technology, Yangon
		University of Nursing, Yangon
		University of Medicine 2, Yangon
	Vietnam	University of Medicine and Pharmacy at Ho Chi Minh City
		Hanoi Medical University
		Hue University of Medicine and Pharmacy
		Can Tho University of Medicine and Pharmacy
University	Australia	Griffith University
	New Zealand	University of Otago
	Singapore	Singapore Institute of Technology
	Mongolia	Mongolian National University of Medical Sciences
	Laos	University of Health Sciences, Lao PDR

	Country	University/Institution
Institutions	Indonesia	Udayana University
	Malaysia	Management & Science University
	Philippines	University of the Philippines Manila
	Spain	University of Alcalá
	Cambodia	University of Health Sciences, Cambodia
	Bhutan	Khesar Gyalpo University of Medical Science of Bhutan
	UK	University of East Anglia
	France	Université Paris-SUD
	Hungary	Semmelweis University
	Russia	I.M. Sechenov First Moscow State Medical University
	Finland	University of Helsinki
	Poland	Wroclaw Medical University
	Lithuania	Lithuanian University of Health Sciences
	China	China Rehabilitation Research Center
	Australia	TAFE Queensland Gold Coast
	Singapore	Nanyang Polytechnic
	Bhutan	Royal Civil Service Commission of The Kingdom of Bhutan
Hospital	Mongolia	Ministry of Education and Science of Mongolia
	Vietnam	The Ministry of Health of The Socialist Republic of Viet Nam
	Vietnam	Cho Ray Hospital
		Bach Mai Hospital
		Hung Vuong Hospital
	China	China-Japan Friendship Hospital
	Mongolia	Mongolia-Japan Teaching Hospital

Various Forms of International Exchanges and Cooperative Activities

IUHW School of Medicine Special Scholarship Program for Overseas Medical Students

IUHW has a scholarship program for international students who pursue a career in medicine. We offer students who had an outstanding score on entrance examination the full amount of six year's tuition fee through to graduation, as well as an enrollment fee, material fees, and living expenses. We have signed a memorandum of understanding with the governments and universities in seven countries of Vietnam, Mongolia, Myanmar, Indonesia, Laos, Cambodia, and Bhutan. The purpose of this program is for scholarship students to gain Japanese medical license, and after having clinical experience in the affiliated facilities, to return their home countries and contribute in the development of health and medical care.

IUHW Scholarship Program

IUHW established its own scholarship program for students from Asian countries in order to contribute in the development of human resources who will become leaders in medical and welfare fields. Strongly supported by the "Asia-Pacific Ladies Friendship Society," in selecting international students to be awarded scholarships, the program covers the total amount of tuition and other expenses. International students in the program are obliged to return home as soon as their graduation and take on leadership positions in their relevant fields. In 2018, we have signed a memorandum of understanding with Mongolian government and established another scholarship program for Mongolian students from fiscal year 2019. We signed a memorandum of understanding with the Vietnamese Ministry of Health in 2019 and launched a new scholarship program for Vietnamese students in 2020. Each year, this scholarship will be awarded to up to 10 students who meet the eligibility requirements in both countries, for a period of four or six years of study.

Academic Exchange Agreements

For international students, IUHW has set up a comfortable study environment such as scholarship programs and Japanese Language Program (JLP) for pre-enrollment students to study Japanese language. So far we have accepted total 786 students (as of May 1, 2025). There are quite many graduates who actively play various roles in medical and welfare fields in Japan as well as in their home countries.

Telepathology and Telediagnosis Projects

Since fiscal year 2011, under the auspices of the international medical alliance project promoted by the Ministry of Economy, Trade and Industry (METI), IUHW successfully conducted the "Remote Pathology and Diagnostic Imaging Project" in China and Vietnam. These projects combine advanced Japanese diagnostic technology with advanced test equipment technology and ICT are developed as a remote diagnostic system in countries lacking specialists in diagnostic imaging and pathology. We will continue to work on technical exchanges and medical support for international contribution.

Establishment of health checkup center in Vietnam

In October 2018, IUHW opened a Japanese style of health checkup center, "Health Evaluation and Promotion Center - Cho Ray Hospital International University of Health and Welfare (HECI)," in Ho Chi Minh City in collaboration with the national Cho Ray Hospital, the first of its kind in Vietnam. The facility features high standard of health checkup services our group has to offer, with state-of-the-art equipment and relaxing environment.

Promotion of Overseas Medical Cooperation

IUHW actively promotes international medical cooperation to embody one of the fundamental principles of "A university directed towards the attainment of global standards". As an example, IUHW donated rehabilitation equipment to the National Rehabilitation Hospital in Yangon, Myanmar, in 2017. A memorandum of understanding on human resource development in the field of rehabilitation was signed with the Ministry of Health and Sports in Myanmar, and the IUHW Rehabilitation Training Center was established in the hospital. In addition, IUHW, together with Sanno Hospital, concluded a tripartite academic agreement with Hung Vuong Hospital in Vietnam, to promote the cooperation of (1) exchange of experts and researchers, (2) student training at Hung Vuong hospital, and (3) research cooperation and academic conferences.

In September 2022, a joint medical symposium was held between our university and the Mongolian National University of Medical Sciences to commemorate the 80th anniversary of the founding of the university, with which we have an academic agreement. Our university also signed an agreement with the Mongolia-Japan Teaching Hospital to establish an IUHW Remote Training Center (tentative name) within the hospital to conduct remote pathology and remote image diagnosis, aiming to strengthen the medical cooperation system to improve Mongolia's medical welfare sector.

In September 2023, a symposium was held to commemorate the 50th anniversary of the establishment of diplomatic relations between Japan and Vietnam. Approximately 400 government officials and medical professionals from both countries participated in discussions. During the symposium, President Takagi announced a program to commemorate the 50th anniversary of the establishment of diplomatic relations between Japan and Vietnam by inviting 50 medical professionals to a two-week training program in Japan. The first group was invited to this training in March 2024 and the second group in August 2024. The second step is scheduled for August 2024.



International exchange party



Signing ceremony for Mongolian scholarship program and Vietnam Scholarship program



Diagnosis room at health checkup center in Vietnam



Signing ceremony on tripartite academic agreement with Hung Vuong Hospital



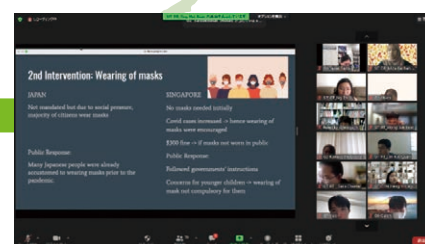
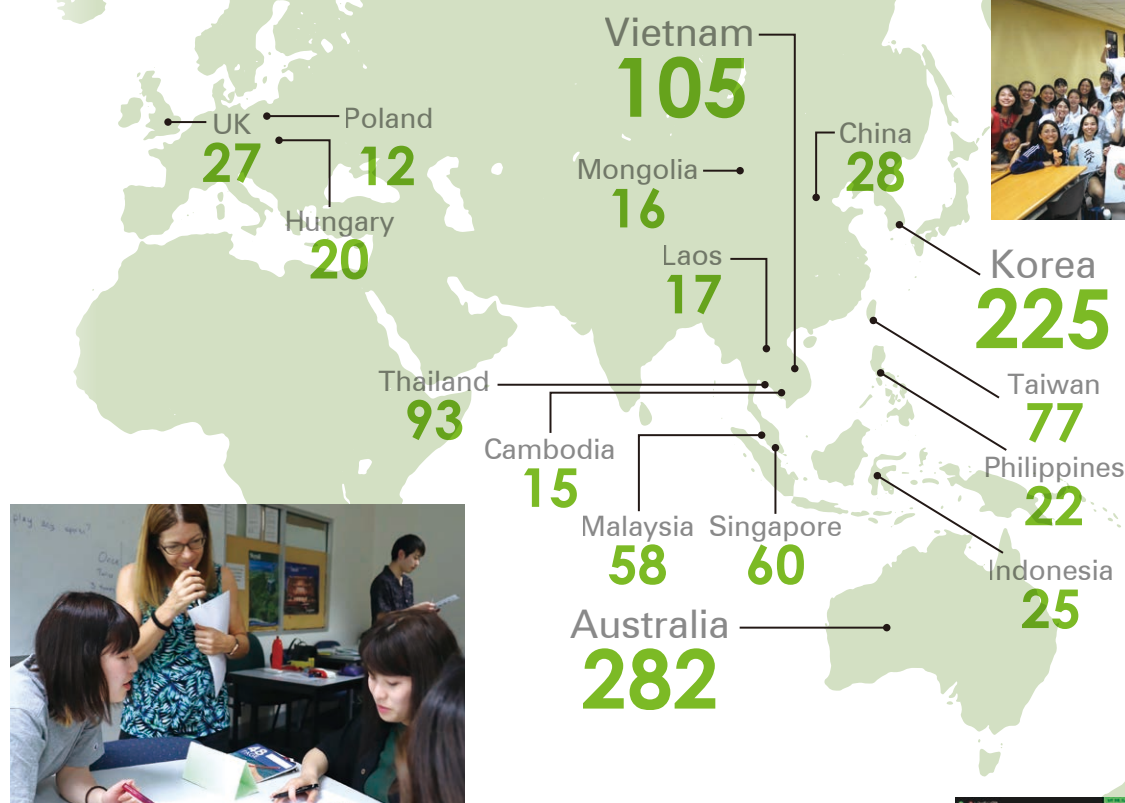
Symposium Commemorating the 50th Anniversary of the Establishment of Diplomatic Relations between Japan and Vietnam

General Education Subjects: Overseas Training Program

After pre-visit courses in Japan, students travel and study different cultures, health care, and welfare at overseas partner's medical institutions, welfare facilities, universities, and other relevant facilities for approximately two weeks during either summer or winter breaks. Under the guidance of local medical staff, they acquire valuable experiences by being involved in actual medical settings in foreign countries and regions. During academic year 2024, 1,082 students trained at medical, health, and welfare facilities in various countries such as Australia, Korea, and Vietnam.

1,082 Students

went overseas to experience medical welfare on the scene in the academic year of 2024.



Online Overseas Training Participants

Due to the COVID-19 pandemic, overseas training in 2020 and 2021 was cancelled, real-time online training was conducted with universities and research centers in China, Singapore, Thailand, Cambodia, and Hungary, all of whom are involved in collaborative agreements with our university. In addition, universities in Korea, Taiwan, and other countries provided us with recorded lectures.

Other participants' assertiveness inspired me

I participated in two online exchange programs, one with a university in Singapore and another in Mongolia. The exchange involved presentations and discussions on healthcare systems and introductions of each other's culture. The fact that students on the other side of the screen were able to ask questions openly, even when speaking to a teacher, made a big impression on me. I strongly felt that I would like to study English more and become a confident speaker as I aim to be involved in international activities through NGOs in the future.



School of Health Sciences at Narita,
Department of Medical Technology and
Sciences (As 3rd year)

TANAKA Shisai

My resolve to realize my future dream got stronger.

In the group work after the lecture, we interacted with each other keeping in mind how the healthcare system differs between Japan and Singapore due to the differences in culture and traditions between the two countries. My dream is to develop new endocrine drugs other than injectable drugs, which are too burdensome for children and the elderly. Through this training program, I realized that there are many patients overseas who find injectable drugs burdensome, which further strengthened my desire to realize my dream.



School of Pharmacy at Fukuoka,
Department of Pharmaceutical
Sciences (As 3rd year)

KAMAGA Reiichi



Nguyen Gia Thinh
from the Socialist Republic of Vietnam
6th year student in School of Medicine
Narita Campus

International Students

Features

1

University to foster health, medical, and welfare professionals

2

One of the few universities with entrance exam intended for international students in the health, medical, and welfare fields

4

Various supporting system for international students

- Undergraduate students with student visa can receive waivers of up to half of their tuition and course fees (other fees apply) under certain conditions. To some extent, the waiver of school expenses for graduate students is also available.

- International students with IUHW Bachelor's Degree who intend to study further at IUHW Graduate School are to be remitted all of their entrance fee.

- Several private agencies and local autonomous bodies offer various types of scholarships for international students.

- When students join the National Health Insurance, 70% of their medical bills are covered by the insurance. In addition, the IUHW education mutual aid can support the students by covering the rest of the 30%, which means there is no need for international students to worry about medical expenses. For that privilege, each undergraduate pays 30,000 yen per year to the mutual aid, which is compulsory. However it is optional for graduate students.

- Student Dormitory (conditions of use apply)

For details, please consult the school staff responsible for this matter.

3

A career path where students can attain national medical qualifications and then work in Japan

Qualifications to obtain a medical care visa: Doctor, Pharmacist, Nurse, Public Health Nurse, Physical Therapist, Occupational Therapist, Certified Orthoptist, Radiological Technologist, Care Worker

Special Entrance Examination for International Students

Screening: Every applicant is required to take the Examination for Japanese University Admission for International Students (EJU), and essay written in Japanese. Each applicant will be interviewed by faculty members.

Qualification:

Applicants should fulfill the following conditions:

- Non-Japanese citizen and age 18 or over
- 12 years of education outside Japan, and with student visa to stay in Japan
- Japanese language proficiency to be able to attend classes taught in Japanese

The above requirements will vary. For the latest and precise information, please contact the admissions office.

Campus Calendar

The school year begins in April, and academic year consists of two or three semesters (School of Medicine).

April	Entrance ceremony/Orientation Beginning of the first semester
May	Founders' Day (1 May) Sports Day
July	Final examinations for the first semester Completion of the first semester (at the end of the month) Summer break
September	Beginning of the second semester (at the end of the month)
October	Exchange party/School festival
December	Christmas party/Winter break
January	Final Examinations for the second semester Completion of the second semester (at the end of the month)
February	Spring break
March	Graduation ceremony

National/Region Origin and Enrollment Number of International Students

China	59
Myanmar	32
Vietnam	31
Mongolia	24
Korea	17
Cambodia	12
Bhutan	5
Indonesia	5
Taiwan	3
USA	3
Canada	3
Nepal	2
Hong Kong SAR China	1
Singapore	1
Thailand	1
Philippines	1
Malaysia	1
Laos	1
Sri Lanka	1
Namibia	1

*AY2025

International Center

At Otawara and Narita Campus, there are sections called International Center, where dedicated staff offer assistance to international students. The following is a list of what is offered at the center:

1. Japanese Language Classes

Instructors who specialize in Japanese language offer Japanese classes to international students. They offer not only classes but also any help and support concerning language problems the students might face.

2. Visa

When students need help in applying for and acquiring a visa, extending and renewing their visa, and for permission for other activities, the center staff is always there to help them.

3. Housing

Students are advised to contact the center regarding housing. The City of Otawara has its own housing policy, and international students are welcome to stay in city-owned apartments at affordable rate. Many of the international students of Narita Campus live in IUHW dormitory called "Narita International House."

4. Events

The center plans events for international students, so that they can get to know each other and learn to support one another. Japanese students are also invited, so that students on campus, regardless of nationality, can all be good friends.

International Students Studying at the IUHW

Naw Wathong Oo

From the Republic of the Union of Myanmar
5th year student in School of Medicine at Narita Campus



High quality education and generous support are attractive

As I aspire to become an internationally active doctor, I was attracted to this university not only because of its international high quality education, but also because of its extensive practical education. Another thing I had hoped for was the opportunity to interact with international students from various countries. Lectures are given in both English and Japanese, and active learning is also incorporated, which is easy to understand and allows me to learn efficiently. The only thing I was worried about was whether or not I would be able to adjust to life in Japan but International Center has provided me with support in terms of daily life, so I am able to concentrate on my studies without worrying.

Japanese Language Program (JLP)

JLP is designed for people whose native language is not Japanese to help them acquire Japanese language proficiency, and deepen their understanding of the situation, culture, and other aspects of Japan. Experienced, dedicated staff in charge of international students are available to assist them with all of their academic and personal needs, including living arrangements in Japan, JLP studies, and advancement to universities and other schools. JLP students have access to the same facilities as IUHW students. Furthermore, our program allows students to take some of the courses offered at IUHW and graduate schools. With networking events also available for international students, JLP offers opportunities for students to lead an enriching campus life.

Features

1

Customized Academic Guidance

All classes have homeroom faculty. Experienced faculty provide meticulous guidance.

3

Tailored Guidance on Post-completion Plans

Various supports are available to make students' post-completion plans.

2

Extensive Supports

Extensive supports are offered for students' academic and personal needs.

4

Japanese Language Program by University Specializing in Health and Welfare

Credited Auditor System

Students who satisfy the Japanese language proficiency and other requirements may take some courses that are offered at IUHW undergraduate or graduate schools. In addition, tuition will be waived for up to three courses per semester. If students qualify for credit under this program, in some cases the credit will be counted if and when they enroll in IUHW undergraduate and graduate schools.

Volunteer Activities

IUHW encourages students to participate in volunteer activities, by sharing one's time and talent, by communicating with others which are required of medical and welfare service professionals.

In the university, there are more than 30 active volunteer groups.

Volunteer Activities at Medical and Welfare Facilities on Campus

Students interact with facility users at the medical and welfare facilities on campus.



Activities to Interact with Children

Students are having a good time with children who go to the school facility near the university.



International Volunteer Activities

Students engage in activities related to international health and international cooperation.



Classroom scene

Admission Requirements

- Applicant should be a non-native speaker of Japanese and be able to obtain a Certificate of Eligibility for resident status.
- Applicant must have completed at least 12 years of basic education in a country outside Japan, or have the equivalent education (this condition should be met before entering JLP).

For more information on applying, see the Application Guideline.

Curriculum

- One-year program*: The university will confer certificates of completion to students whose completion of the program was approved.
- Spring semester (April-September) and Fall semester (October-March). Applications are accepted twice a year.
- Length of courses in a semester: 18 weeks

*Students wishing to continue their studies can enroll up to two years.

Concerts at Hospitals and Welfare Facilities

Students visit hospitals and welfare facilities and perform choral concerts.



IUHW Volunteer Center (at Otawara Campus)

The Volunteer Center supports students who would like to participate in these volunteer activities. The center also plans and carries out lectures by volunteers active in Tochigi and events to promote exchanges with students from other universities.



Graduate School International University of Health and Welfare

“For researchers to explore the future of health, medical, and welfare fields”

The Graduate School at International University of Health and Welfare offers programs for scholars for further mastery as researchers and expert medical partners. The curriculum is designed to accommodate those who work during the day and the graduate school welcomes those who have been away from study for a while.

History

The Graduate School of IUHW aims to foster health and welfare researchers, educators, and experts to meet the needs of the 21st century.

1999	Establishment of MS Program in Health Sciences
2001	Establishment of PhD Program in Health Sciences and MA Program in Health and Welfare, and Health Service Management
2004 MAR	First year to grant doctoral degrees—the completion of the entire educational program at IUHW
APR	Establishment of Department of Clinical Testing Laboratory Research (In 2008 the title of the same specialty changed to Research and Development of New Medicinal Treatment*.)
2005	Establishment of Departments of Assistive Cytogenic Reproduction* and Health and Welfare Journalism*
2006	Establishment of Departments of Midwifery and Orthoptics and Visual Sciences
2007	Establishment of MS Program in Clinical Psychology
2008	Establishment of Department courses in Radiological Technologist for Cancer Treatment, Certified Pharmacist for Cancer Medicinal Treatment, and Technical Cancer Registry (Supported by the Ministry of Education and Science “Training Scheme for Cancer Treatment Professionals”)
2009	Establishment of Department of Pharmaceutical Sciences and MS program for Bioscience-pharmacy Establishment of the PhD Program in Pharmaceutical Sciences Establishment of Department of Nurse Practitioner
2010	Establishment of MA Program of Business Administration in Healthcare (h-MBA) Establishment of Department of Health Information Management and Analysis
2011	Establishment of PhD Program in Journalism in Healthcare Establishment of PhD Program in Clinical Psychology Establishment of Department of Assistive Technology Science
2015	Establishment of Departments of Education and Management in Health and Welfare
2016	Establishment of Departments of Medical Laboratory Science
2017	Establishment of Departments of Health Care Interpreting and International Health Service Management
2018	Establishment of PhD Program in Medicine Establishment of MPH Program in Public Health
2024	Establishment of Graduate School of Public Health (Professional Degree Program)

*Entirely new departments in Japan

Campuses and Curricula for scholars to learn and research while working

More and more health and welfare specialists want to study at graduate school to gain advanced knowledge and skills while working. As the number is increasing year by year, our graduate school has set up seven campuses in Otawara, Narita, Akasaka in Tokyo, Odawara, Atami, Fukuoka, and Okawa. Most classes are scheduled in the evenings and on Saturdays. In addition, our MS program for Clinical Psychology has been accredited (as a class 1 Graduate School) by the Foundation of the Japanese Certification Board for Clinical Psychologists.

Departments

[Master's Program]

Health Sciences

Nursing
Training System for Nurses Pertaining to Specified Acts
Midwifery
Physical Therapy
Occupational Therapy
Speech, Language and Hearing Sciences
Orthoptics and Visual Sciences
Assistive Technology Science
Rehabilitation
Radiological Science
Clinical Science in Embryology
Education and Management in Health and Welfare
Medical Laboratory Science

Master's Program in Health and Welfare, and Health Service Management

Health Service Management
Health Information Analyst

International Cooperation in Health and Welfare
Development of Care and Network
Health and Social Service
Journalism on Health and Welfare Issues
Health Care Interpreting and International Health Service Management

Clinical Psychology in Health and Welfare

Graduate School of Pharmaceutical Sciences

Graduate School of Public Health (Professional Degree Program)

[Doctoral Program]

Health Sciences

Nursing

Midwifery
Physical Therapy
Occupational Therapy
Speech, Language and Hearing Sciences
Orthoptics and Visual Sciences
Assistive Technology Science
Rehabilitation
Radiological Science
Clinical Science in Embryology

Medical Laboratory Science

Health Service Management
Health Information Management and Analysis
International Cooperation in Health and Welfare
Development of Care and Network
Health and Social Service
Journalism on Health and Welfare Issues

Clinical Psychology in Health and Welfare

Graduate School of Pharmacy

Graduate School of Medicine

University Campuses and Access

Otawara Campus (Otawara City, Tochigi)



Admission Office:

URL <https://otawara.iuhw.ac.jp/>

E-mail nyushi@iuhw.ac.jp

2600-1 Kitakanemaru, Otawara City, Tochigi 324-8501

Tel.: +81-287-24-3200 Fax.: +81-287-24-3199

JR Sendai Station	JR Tohoku Shinkansen 70 min.	JR Nasushiobara Station	School Bus 20 min.	Otawara Campus
JR Tokyo Station	JR Tohoku Shinkansen 70 min.			
JR Ueno Station	JR Tohoku Hosen (Utsunomiya-sen)	JR Nishinasuno Station	City Bus 30 min.	

Narita Campus (Narita City, Chiba)



Admission Office:

URL <https://narita.iuhw.ac.jp/>

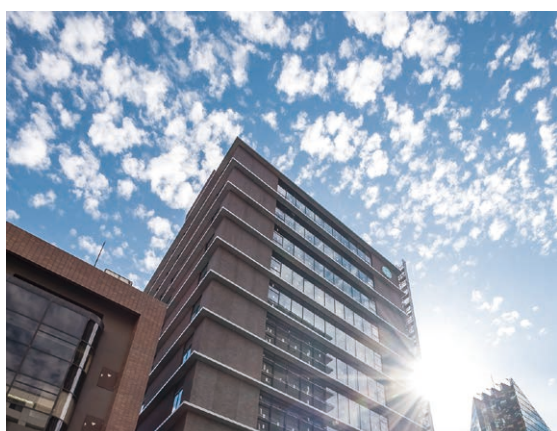
E-mail admission@iuhw.ac.jp

4-3 Kozunomori, Narita City, Chiba 286-8686

Tel.: +81-476-20-7810 Fax.: +81-476-20-7812

JR Tokyo Station	JR Sobu Express Line 23 min.	JR Funabashi Station	Walk 5 min.	Keisei Funabashi Station	Narita Campus
JR Chiba Station	JR Rapid Airport Narita 36 min.	JR Narita Station	Walk 5 min.	Keisei Line Express 37 min.	
JR Toride Station	JR Joban Line 10 min.	JR Abiko Station		Keisei Kozunomori Station 1 min.	
				Keisei Line 3 min.	
				Keisei Narita Station	

Tokyo Akasaka Campus (Minato Ward, Tokyo)



Admission Office:

URL <https://akasaka.iuhw.ac.jp/>

E-mail akasaka-nyushi@iuhw.ac.jp

4-21-26 Akasaka, Minato Ward, Tokyo 107-8402

Tel.: +81-3-5574-3903 Fax.: +81-3-5574-3904

JR Tokyo Station	Tokyo Metro Marunouchi Line 8 min.	Akasaka-mitsuke Station	Walk 3 min.	Tokyo Akasaka Campus
JR Shibuya Station	Tokyo Metro Ginza Line 8 min.			
JR Omiya Station	JR Shonan-Shinjuku Line, via JR Shinjuku 50 min.			
JR Chiba Station	JR Sobu Line (Rapid), via JR Tokyo 50 min.			

Odawara Campus (Odawara City, Kanagawa)



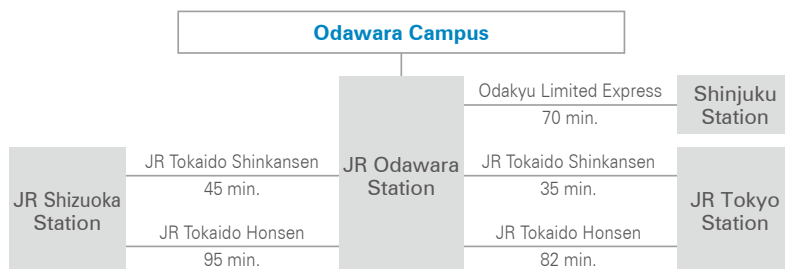
Admission Office:

URL <https://odawara.iuhw.ac.jp/>

E-mail od-nyushi@iuhw.ac.jp

1-2-25 Shiroyama, Odawara City, Kanagawa 250-8588

Tel.: +81-465-21-0361 Fax.: +81-465-21-6501



Okawa Campus (Okawa City, Fukuoka)



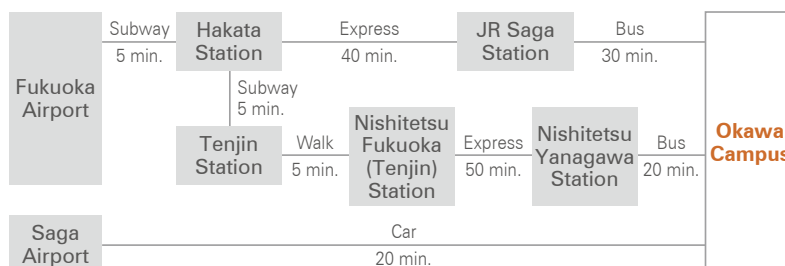
Admission Office:

URL <https://fukuoka.iuhw.ac.jp/>

E-mail kyushu-nyushi@iuhw.ac.jp

137-1 Enokizu, Okawa City, Fukuoka 831-8501

Tel.: +81-944-89-2100 Fax.: +81-944-89-2001





CONTACT US

Otawara Campus

Tel.: +81-287-24-3200

E-mail: nyushi@iuhw.ac.jp

Narita Campus

Tel.: +81-476-20-7810

E-mail: admission@iuhw.ac.jp

Tokyo Akasaka Campus

Tel.: +81-3-5574-3903

E-mail: akasaka-nyushi@iuhw.ac.jp

Odawara Campus

Tel.: +81-465-21-0361

E-mail: od-nyushi@iuhw.ac.jp

Okawa Campus

Tel.: +81-944-89-2100

E-mail: kyushu-nyushi@iuhw.ac.jp

<https://www.iuhw.ac.jp/>

INTERNATIONAL