



[Redacted Header]	
[Redacted]	[Redacted]
[Redacted]	[Redacted]
	[Redacted]

[Redacted]
[Redacted]
[Redacted]

# GRADUATE SCHOOL OF MEDICINE (Doctoral Program)

## Overview of Graduate School of Medicine

- Course : Doctoral Program in Medicine (4-year course)
- Admission quota : 20 persons/year
- Degree : Doctor of Philosophy (Ph.D.) in Medical Science
- Location : Narita Campus, Tokyo Akasaka Campus, Otawara Campus, Fukuoka Campus and Okawa Campus



**Director of the IUHW Graduate School of Medicine**  
**Shoji Tsuji, M.D., Ph.D.**

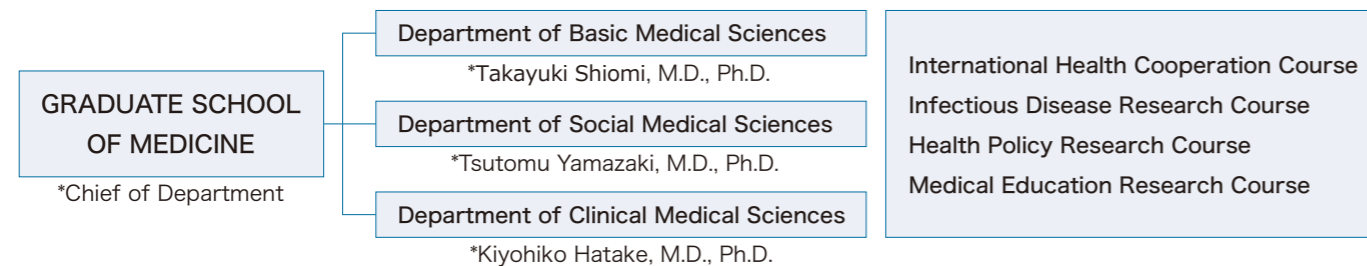
[Profile] Graduate of Faculty of Medicine, The University of Tokyo / Former Chairman of the Department of Neurology, Graduate School of Medicine / The University of Tokyo, Former Director of the Medical Genome Research Initiative, The University of Tokyo / Emeritus Professor, The University of Tokyo / Associate Member, The Science Council of Japan

IUHW Graduate School of Medicine provides comprehensive education programs aiming to nurture scientists, medical specialists, and professionals who will actively participate in broad international medical fields. The applicants need to select one of the three Departments including Department of Basic Medical Sciences, Department of Social Medical Sciences and Department of Clinical Medical Sciences, consulting to the supervisor teachers in advance. English proficiency will be cultivated through the education programs. Furthermore, students may take the optional courses including International Health Cooperation Course, Infectious Disease Research Course, Health Policy Research Course and Medical Education Research Course, and certificates will be issued upon completion of the course.

## Graduate School of Medicine Characteristics

### Three Major Departments (Research Fields):

Every graduate student must belong to a laboratory to do research and course works in either of below-listed departments:



### Four elective courses of transversal subjects:

Some graduate students may be able to learn additionally in the below-listed courses regardless of the department to belong to:

### IUHW Graduate School of Medicine

- Fosters highly skilled and knowledgeable medical professionals with an international mindset and leadership qualities.
- Functions as a comprehensive university medical research center (knowledge hub) for conducting cutting-edge research required in society.
- Nurtures excellent researchers and professionals who can work internationally and contribute to furthering medical education.
- Conducts international medical research and enhancement of English proficiency backed by academic exchanges with other countries.
- Develops medical equipments and devices for medical education to further enhance the skills of international medical professionals.

# GRADUATE SCHOOL OF MEDICINE (Doctoral Program)

## Curriculum and Features

Three main departments (research fields) and four elective and transversal courses designed to develop researchers capable of working internationally.

### ⟨ Department of Basic Medical Sciences ⟩

Teaching staff with a wealth of experience abroad and in clinical settings will guide students to become international researchers who can conduct translational research for scientifically elucidating issues in medical practice.

### ⟨ Department of Social Medical Sciences ⟩

Students will be trained as researchers with skills for improving health in the international society and local community, enhancing health and welfare services, and advancing medical education, with a focus on acquiring required techniques such as statistics and medical informatics from the perspective of preventive medicine and public health.

### ⟨ Department of Clinical Medical Sciences ⟩

Students will acquire the skills and knowledge to become advanced clinical researchers utilizing novel technologies such as regenerative medicine and genetic cellular engineering and new findings in cellular biology, molecular biology and other areas to further advance clinical research in Japan and overseas.

### ● Four interesting, elective and transversal courses

⟨ International Health Cooperation Course ⟩ ⟨ Infectious Disease Research Course ⟩ ⟨ Health Policy Research Course ⟩ ⟨ Medical Education Research Course ⟩ Students who complete a course elective subjects will receive a Certificate of Completion.

Category	Subject Name	Category	Subject Name
Required Subjects	Advanced Seminar on Medical Research (In addition to required "Research Ethics", transversal topics will be selected based on students' needs)	Elective Subjects (for Clinical Medical Sciences) cont'd	<ul style="list-style-type: none"> <li>•Diabetes, Metabolism and Endocrinology</li> <li>•Obstetrics and Gynecology</li> <li>•Breast Surgery</li> <li>•Pediatric Surgery</li> <li>•Dermatology</li> <li>•Plastic and Reconstructive Surgery</li> <li>•Rehabilitation Medicine</li> <li>•Psychiatry</li> <li>•Ophthalmology</li> <li>•Otorhinolaryngology</li> <li>•Hematology</li> <li>•Clinical Oncology</li> <li>•General Medicine</li> <li>•Psychosomatic Internal Medicine</li> <li>•Geriatric Medicine</li> <li>•Anesthesiology and Intensive Care Medicine</li> <li>•Emergency Medicine</li> <li>•Radiology</li> <li>•Clinical Laboratory Medicine</li> </ul>
	<ul style="list-style-type: none"> <li>•Collection and writing of Academic Manuscript</li> <li>•Exercise for Biomedical Statistics</li> <li>•Presentation of Outcome of Research</li> <li>•Exercise for Research Language</li> <li>•Introduction to Medical Research</li> </ul>		<ul style="list-style-type: none"> <li>•Pediatrics</li> <li>•Orthopedic Surgery</li> <li>•Rheumatology</li> <li>•Neurology</li> <li>•Neurosurgery</li> </ul>
Elective Subjects (for Basic Medical Sciences)	(Advanced Seminar on) <ul style="list-style-type: none"> <li>•Physiology</li> <li>•Pharmacology</li> <li>•Molecular Biology</li> <li>•Pathology</li> <li>•Biochemistry</li> <li>•Immunology</li> <li>•Anatomy</li> <li>•Medical Genetics</li> </ul>	Elective Subjects (for four Transversal Courses)	(Advanced Seminar on) <ul style="list-style-type: none"> <li>•Healthcare System</li> <li>•International Health Cooperation</li> <li>•Infectious Disease Epidemiology</li> <li>•Global Infectious Disease</li> <li>•Health Policy</li> <li>•Technique in Medical Education</li> <li>•Medical Education Specialists</li> <li>•Teaching Technique in Medical Simulation Education</li> <li>•Teaching Technique in Clinical Training</li> </ul>
Elective Subjects (for Social Medical Sciences)	(Advanced Seminar on) <ul style="list-style-type: none"> <li>•Forensic Medicine</li> <li>•Public Health</li> <li>•Infectious Disease Medicine</li> <li>•Medical Education</li> </ul>		
Elective Subjects (for Clinical Medical Sciences)	(Advanced Seminar on) <ul style="list-style-type: none"> <li>•Pulmonary Medicine</li> <li>•Cardiology</li> <li>•Vascular Surgery</li> <li>•Gastroenterology and Hepatology</li> <li>•Hepato-Biliary-Pancreatic and Gastrointestinal Surgery</li> <li>•Nephrology</li> <li>•Thoracic Surgery</li> <li>•Cardiac Surgery</li> <li>•Urology</li> </ul>		
Special Training for Medical Research (Required subject based on each Medical Research Field)			

## Student Payment

(Unit: Yen)

Program	Payment method		Admission fee	Class fee	Facilities maintenance fee	Instalment payment amount	Total	Four-year total
Doctoral Program in Medicine	Lump-sum payment	During admission	200,000	600,000	100,000	—	900,000	3,000,000
		During admission	200,000	300,000	50,000	550,000		
	Instalment payment	After admission (September)	—	300,000	50,000	350,000		

## Requirements for completing the Doctoral Program in Medicine

Acquiring 30 credits or more, as follows:

- ① Required subject (specialized subject: 20 credits and Thesis completion)  
(Advanced Seminar on Medical Research: 2 credits and Special Training for Medical Research: 18 credits)
- ② Elective subject (10 credits or more)

# GRADUATE SCHOOL OF PUBLIC HEALTH (Master's Program)

## Overview of Graduate School of Public Health

■ Course : Master's Program in Public Health (2-year course)

■ Admission quota : 10 persons/year

■ Degree :  
 <Department of Global Health / Health Policy and Management / Epidemiology and Social Medicine >  
 ⇒ **Master of Public Health (MPH)**  
 <Department of Preventive Medicine >  
 ⇒ **Master of Medical Science**

■ Location : Narita Campus and Tokyo Akasaka Campus

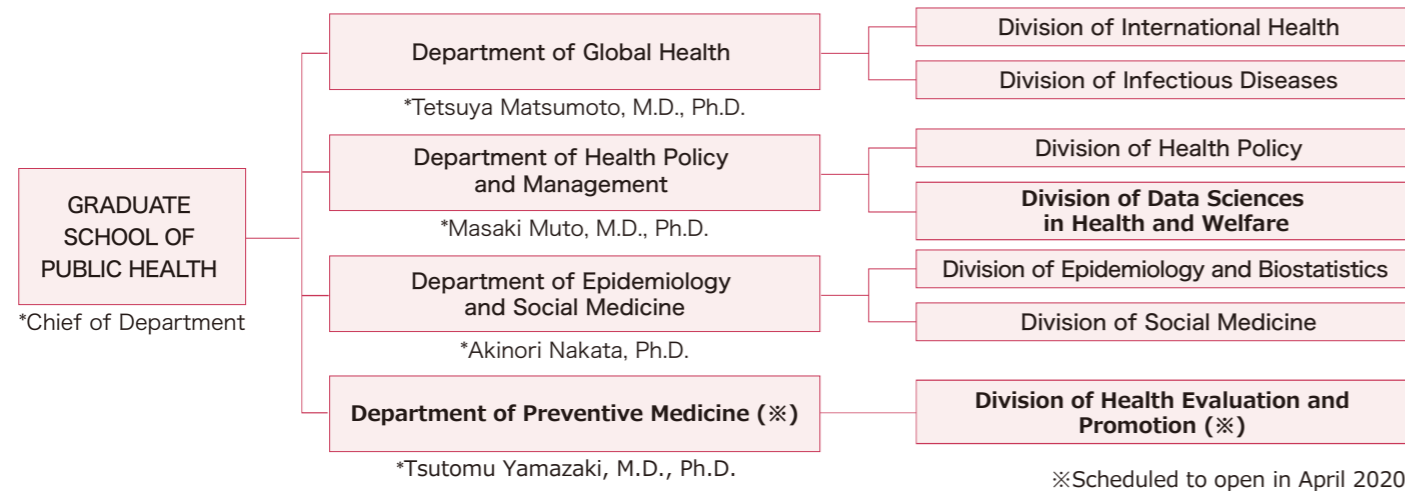


Director of IUHW Graduate School of Public Health  
**Shunya Ikeda, M.D., Ph.D.**

[Profile] Graduate of Keio University, School of Medicine / Graduate of Harvard School of Public Health / Former Visiting Researcher, University of Pennsylvania / Former Lecturer, Keio University, School of Medicine

Students systematically study five basic subject areas in the first term of the first year, after which they select a division of interest to study further under the tutelage and guidance of our experienced teaching faculty. The Akasaka campus boasts professors with extensive expertise in various fields including health economics research, epidemiology research, and medical big data analysis. Meanwhile the Narita Campus offers opportunities to conduct joint studies on international health with other countries, and also carry out collaborative research on infectious diseases with the International Research Center for Infectious Diseases, which are also specialty areas of this program.

## Graduate School of Public Health Characteristics



### IUHW Graduate School of Public Health provides

- A comprehensive education of public health, by utilizing a number of experts in medicine and public health in various medical institutions and facilities of the International University of Health and Welfare Group.
- An educational curriculum based on the Council on Education for Public Health (CEPH), US certification body of School of Public Health.
- Bilingual lectures and advices in English and Japanese.
- Flexible and comprehensive educational environment for public health education and research, designed for a wide range of full-time and part-time students from physicians to specialists in healthcare and public health.

## Application Requirements for the Examination of IUHW Graduate School of Public Health

■ Applicants must have graduated (or should be expected to graduate) from a 4-year university, or should be over the age of 22 by the time of admission and must have been approved by IUHW Graduate School application qualifications screening committee that he/she is equal to or higher than those who have graduated from 4-year universities. (Please check the application guideline for details)

## Completion Requirements for Graduate School of Public Health

Acquiring 30 credits or more (including Thesis completion), as follows:

< Medical background >

Department of Global Health / Health Policy and Management / Epidemiology and Social Medicine : Required subject 24 Credits, Elective subject 6 Credits

Department of Preventive Medicine : Required subject 20 Credits, Elective subject 10 Credits

< Non-medical background >

Department of Global Health / Health Policy and Management / Epidemiology and Social Medicine : Required subject 26 Credits, Elective subject 4 Credits

Department of Preventive Medicine : Required subject 22 Credits, Elective subject 8 Credits

# GRADUATE SCHOOL OF PUBLIC HEALTH (Master's Program)

## Three Major Departments

### 1. Department of Global Health

- ◇ **Division of International Health** offers a wide-range of public health training and researches related to international health. This division develops the careers of doctors and public health specialists who can make suggestions to the public health issues at local, national and international level.
- ◇ **Division of Infectious Diseases** develops experts working as a core member of researchers of infectious diseases at various medical institutions. Students will gain specialized skills in evaluating data such as surveillance and carrying out up-to-date technologies for understanding occurrence and epidemic of infectious diseases.

### 2. Department of Health Policy and Management

- ◇ **Division of Health Policy** develops the critical thinking and applied problem solving skills for a wide-range of public health policies and systems.
- ◇ **Division of Health Management** offers essential management skills required in the health sector. Students will gain deep knowledge of key stakeholders within health systems with understandings of the strategic, political and ethical dimensions of health care sectors.

### 3. Department of Epidemiology and Social Medicine

- ◇ **Division of Epidemiology and Biostatistics** equips students with knowledge and statistical skills to make valuable contributions to medical researches, which are the essential for clinical trials, epidemiology and pharmaco-epidemiology for designing medical research.
- ◇ **Division of Social Medicine** offers wide-range of public health training and researches for resolving various medical and public health issues such as maternal and child health care, elderly health, and industrial health.

### Five basic subject areas in public health

1. Biostatistics
2. Epidemiology
3. Environmental Health
4. Health Policy and Management
5. Social Behavior Science

### Acquiring the eight core competencies

1. Evidence-based Approaches to Public Health
2. Public Health & Health Care Systems
3. Planning & Management to Promote Health
4. Policy in Public Health
5. Leadership
6. Communication
7. Inter-professional Practice
8. Systems Thinking

Category	Subject Name	Category	Subject Name
Required Subjects (for every Public Health Research Field)	Introduction to Biostatistics	Elective Subjects (applicable to each Public Health Research Field)	International Organization
	Introduction to Epidemiology		Occupational Health
	Introduction to Health Services Administration		Introduction to Clinical Epidemiology
	Introduction to Environmental Health Sciences		Topics in Clinical Epidemiology
	Introduction to Social and Behavioral Sciences		Introduction to Health Economics
Introduction to Medical Ethics	Quality and Risk Management in Healthcare		
Required Subjects (based on each Public Health Research Field)	Overview of the Each Field of Medicine I		Taxation on Health and Welfare
	Overview of the Each Field of Medicine II		Financial Accounting
	Introduction to International Health		Management Accounting
	Topics in International Health		Medical Law and Ethics
	Infectious Diseases and Medical Microbiology		Healthcare Marketing
	International Aspects of Infectious Diseases		Medical Strategic Management
	Introduction to Health and Welfare Policy		Medical Anthropology
	Topics in Health and Welfare Policy		Introduction to Clinical Psychology
	Introduction to Healthcare Management		Introduction to Research Design
	Topics in Health and Welfare Management	Research Design Exercise	
	Topics in Biostatistics	Introduction to Qualitative Research Methods	
	Topics in Epidemiology	Introduction to Psychology Research Methods	
	Topics in Social and Behavioral Sciences	Introduction to Healthcare Information Systems	
	Topics in Social Medicine		

## Student Payment

(Unit: Yen)

Program	Payment method		Admission fee	Class fee	Facilities maintenance fee	Instalment payment amount	Total	Two-year total
Master's Program in Public Health	Lump-sum payment	During admission	200,000	600,000	100,000	—	900,000	1,600,000
		After admission (September)	—	300,000	50,000	350,000		
	Instalment payment	During admission	200,000	300,000	50,000	550,000		