

Scholarship for physicians advancing to the Basic Medical Fields and Social Medical Fields

Physicians (both Japanese and foreign nationals with a medical license, excluding dentists and veterinarians) advancing to the Basic Medical Fields or Social Medical Fields are eligible to receive a half scholarship (equivalent to 50% of class fees).

※The scholarship amount varies according to the annual class fees.

※The scholarship cannot be used in conjunction with the class fee reduction and exemption for self-supporting international students.

【Eligible Departments】

Doctoral Program - Department of Basic Medical Sciences, Department of Social Medical Sciences

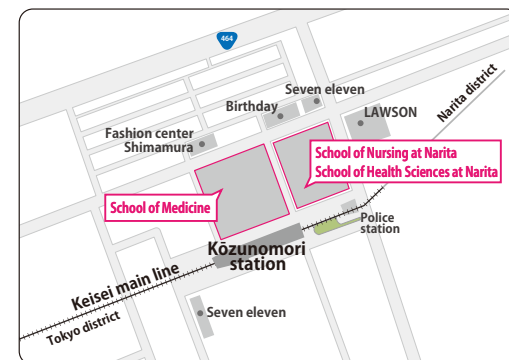
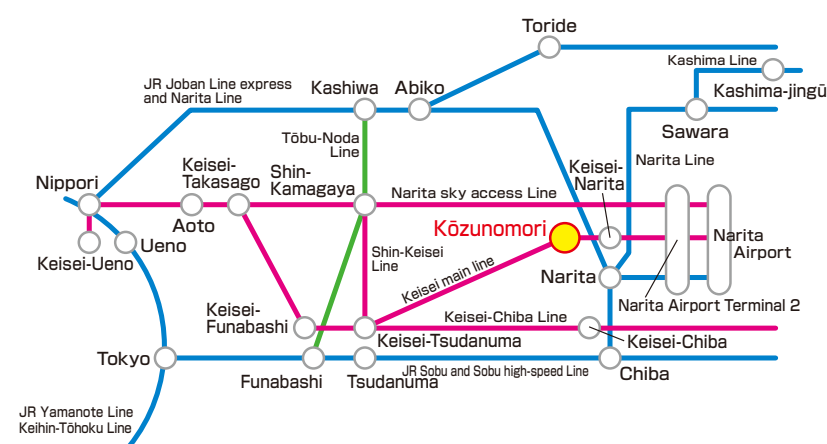
Master's Program - Department of Global Health, Department of Health Policy and Management, Department of Epidemiology and Social Medicine

Class fee reduction and exemption for self-supporting international students

Self-supporting international students who will be able to acquire an international student visa status by the time of admission may be eligible for a reduction in class fees (30%) for economic reasons that make it difficult for him/her to make full payment of the fees. Please refer to the application guidelines for information on application conditions for the class fee reduction and exemption.

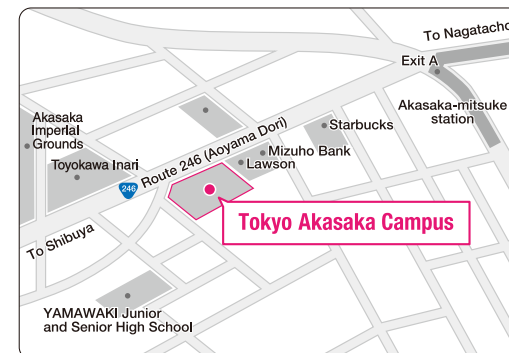
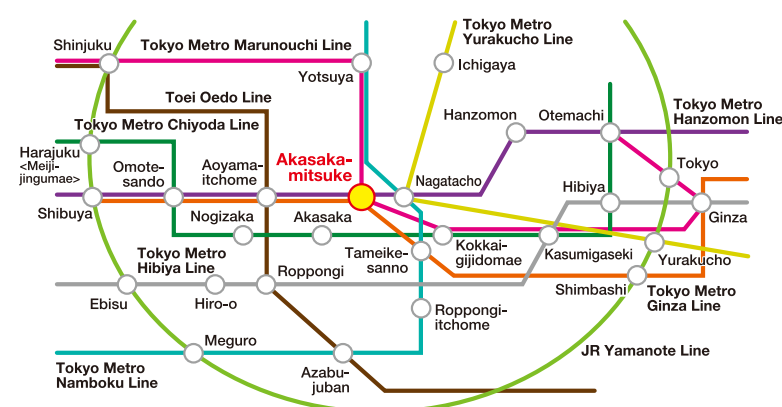
Narita Campus 4-3 Kozunomori, Narita City, Chiba 286-8686

One minute walk from the Keisei Main Line 「Kozunomori」station.



Tokyo Akasaka Campus 4-1-26 Akasaka, Minato Ward, Tokyo 107-8402

Three minutes walk from the 'A' exit of Tokyo Metro 「Akasaka-mitsuke」 station.



Admission consultation desk

IUHW Graduate School, Tokyo Akasaka Campus

4-1-26 Akasaka, Minato-ku, Tokyo 107-8402, Japan

E-mail : daigakuin-nyushi@iuhw.ac.jp

INTERNATIONAL UNIVERSITY OF HEALTH AND WELFARE (IUHW) GRADUATE SCHOOL

IUHW GRADUATE SCHOOL OF MEDICINE

Doctoral Program in Medicine (4-year course)

IUHW GRADUATE SCHOOL OF PUBLIC HEALTH

Master's Program in Public Health (2-year course)

2023 GUIDEBOOK



Narita Campus



Tokyo Akasaka Campus

E-mail : daigakuin-nyushi@iuhw.ac.jp

URL : <https://www.iuhw.ac.jp/daigakuin/>



**INTERNATIONAL
UNIVERSITY OF
HEALTH AND WELFARE**



Soichiro Miura, M.D., Ph.D.
Dean, IUHW Graduate School

[Profile]
Graduate of Keio University, School of Medicine, Ph.D. in Medical Science / Former President, National Defense Medical College / Honorary Professor, National Defense Medical College / Visiting Professor, Keio University, School of Medicine / Dean, IUHW Graduate School (since June 2017)

Message from the Dean

IUHW Graduate School was founded in 1999, with the aim of nurturing advanced medical professionals who can become leaders in the fields of health and welfare in Japan. In April 2018 inaugurated a Graduate School of Medicine and Public Health to foster competent personnel capable of further developing medical sciences through collaborations with the IUHW School of Medicine. We will play pivotal roles as an international center for medical exchanges, and provide an even better environment for educational and research activities.

Along with many opportunities to acquire extensive and in-depth knowledge and master academic theory and its application, we will provide more convenient learning system that utilizes information technology, enabling remote access for many working students. Our aim is for the IUHW to be a part of shaping and transforming Japan's future by focusing on the areas with potential for even further development, such as genomics and cancer medicine, international infectious diseases, remote image diagnosis, medical education, health and welfare services management and global health. We will continue to carry out comprehensive education and research activities to facilitate ongoing innovation. We are looking forward to your admission into the IUHW Graduate School of Medicine and Public Health.

IUHW Graduate School Organization Chart

Graduate School of Medicine

Doctoral Program in Medicine (4-year course)

Graduate School of Public Health

Master's Program in Public Health (2-year course)

Graduate School of Health and Welfare Sciences

Doctoral and Master's Program

Graduate School of Pharmacy

Doctoral Program

Graduate School of Pharmaceutical Sciences

Master's Program

IUHW Graduate School offers an excellent environment for working students to continue their education as a graduate student.

Curriculum

Around 90% of our students are working students who attend many weekday evening classes and Saturday classes.



Simultaneous and two-way remote classes

Students can attend classes in remote areas in real time using teleconference facilities.



E-learning system

Internet-based learning allows students to study anytime and anywhere.



The IUHW Narita Hospital opened near Narita International Airport in 2020

The IUHW Narita hospital with international features was established in Narita City, Chiba Prefecture with 642 beds on 105,513 square meters architectural area, close to Narita International Airport and the IUHW Narita campus. The new hospital will cater to the needs of global medicine with a range of facilities with advanced medical technology, including an International Remote Image Diagnosis Center, International Research Center of Infectious Diseases, and Genomic Medicine Research Center. We will provide multilingual service to become a hub institute for world-class medical center.



The IUHW Group has various medical and welfare facilities

Affiliated University Hospitals



IUHW Hospital / Tochigi



IUHW Mita Hospital / Tokyo



IUHW Ichikawa Hospital / Chiba



IUHW Atami Hospital / Shizuoka



IUHW Shioya Hospital / Tochigi

Affiliated Medical Facilities



Sanno Hospital/
Sanno Birth Center
/Tokyo



Fukuoka Sanno Hospital



Takagi Hospital /Fukuoka



Yanagawa Rehabilitation
Hospital /Fukuoka

GRADUATE SCHOOL OF MEDICINE (Doctoral Program)

Overview of Graduate School of Medicine

- Course : Doctoral Program in Medicine (4-year course)
- Admission quota : 20 persons/year
- Degree : Doctor of Philosophy (Ph.D.) in Medical Science
- Location : Narita Campus, Tokyo
Akasaka Campus, Otawara Campus, Fukuoka Campus and Okawa Campus



Director of the IUHW Graduate School of Medicine
Shoji Tsuji, M.D., Ph.D.

[Profile] Graduate of Faculty of Medicine, The University of Tokyo / Former Chairman of the Department of Neurology, Graduate School of Medicine / The University of Tokyo, Former Director of the Medical Genome Research Initiative, The University of Tokyo / Emeritus Professor, The University of Tokyo / Associate Member, The Science Council of Japan

IUHW Graduate School of Medicine provides comprehensive education programs aiming to nurture scientists, medical specialists, and professionals who will actively participate in broad international medical fields. The applicants need to select one of the three Departments including Department of Basic Medical Sciences, Department of Social Medical Sciences and Department of Clinical Medical Sciences, consulting to the supervisor teachers in advance. English proficiency will be cultivated through the education programs. Furthermore, students may take the optional courses including International Health Cooperation Course, Infectious Disease Research Course, Health Policy Research Course and Medical Education Research Course, and certificates will be issued upon completion of the course.

Graduate School of Medicine Characteristics

Three Major Departments (Research Fields):

Every graduate student must belong to a laboratory to do research and course works in either of below-listed departments:



Four elective courses of transversal subjects:

Some graduate students may be able to learn additionally in the below-listed courses regardless of the department to belong to:

IUHW Graduate School of Medicine

- Fosters highly skilled and knowledgeable medical professionals with an international mindset and leadership qualities.
- Functions as a comprehensive university medical research center (knowledge hub) for conducting cutting-edge research required in society.
- Nurtures excellent researchers and professionals who can work internationally and contribute to furthering medical education.
- Conducts international medical research and enhancement of English proficiency backed by academic exchanges with other countries.
- Develops medical equipments and devices for medical education to further enhance the skills of international medical professionals.

Application Requirements for the Examination of IUHW Graduate School of Medicine

■ Applicants must have attained (or should be expected to attain) a Master's Degree, or must have graduated (or should be expected to graduate) from a 6-year curriculum (medical science, dentistry, veterinary medicine, or pharmacy). (Please check the application guideline for details)

Requirements for completing the Doctoral Program in Medicine

Acquiring 30 credits or more, as follows:

- ① Required subject (specialized subject: 20 credits and Thesis completion)
(Advanced Seminar on Medical Research: 2 credits and Special Training for Medical Research: 18 credits)
- ② Elective subject (10 credits or more)

GRADUATE SCHOOL OF MEDICINE (Doctoral Program)

Curriculum and Features

Three main departments (research fields) and four elective and transversal courses designed to develop researchers capable of working internationally.

〈Department of Basic Medical Sciences〉

Teaching staff with a wealth of experience abroad and in clinical settings will guide students to become international researchers who can conduct translational research for scientifically elucidating issues in medical practice.

〈Department of Social Medical Sciences〉

Students will be trained as researchers with skills for improving health in the international society and local community, enhancing health and welfare services, and advancing medical education, with a focus on acquiring required techniques such as statistics and medical informatics from the perspective of preventive medicine and public health.

〈Department of Clinical Medical Sciences〉

Students will acquire the skills and knowledge to become advanced clinical researchers utilizing novel technologies such as regenerative medicine and genetic cellular engineering and new findings in cellular biology, molecular biology and other areas to further advance clinical research in Japan and overseas.

● Four elective and transversal courses

〈International Health Cooperation Course〉〈Infectious Disease Research Course〉〈Health Policy Research Course〉〈Medical Education Research Course〉 Students who complete a course elective subjects will receive a Certificate of Completion.

Category	Subject Name	Category	Subject Name
Required Subjects	Advanced Seminar on Medical Research (In addition to required "Research Ethics", transversal topics will be selected based on students' needs) •Collection and writing of Academic Manuscript •Exercise for Biomedical Statistics •Presentation of Outcome of Research •Exercise for Research Language •Introduction to Medical Research Special Training for Medical Research (Required subject based on each Medical Research Field)	Elective Subjects (for Clinical Medical Sciences)cont'd	•Diabetes, Metabolism and Endocrinology •Obstetrics and Gynecology •Breast Surgery •Pediatric Surgery •Dermatology •Plastic and Reconstructive Surgery •Rehabilitation Medicine •Psychiatry •Ophthalmology •Otorhinolaryngology •Hematology •Clinical Oncology •General Medicine •Psychosomatic Internal Medicine •Geriatric Medicine •Anesthesiology and Intensive Care Medicine •Emergency Medicine •Radiology •Clinical Laboratory Medicine
Elective Subjects (for Basic Medical Sciences)	(Advanced Seminar on) •Physiology •Pharmacology •Molecular Biology •Pathology •Biochemistry •Immunology •Anatomy •Medical Genetics		
Elective Subjects (for Social Medical Sciences)	(Advanced Seminar on) •Forensic Medicine •Public Health •Infectious Disease Medicine •Medical Education		
Elective Subjects (for Clinical Medical Sciences)	(Advanced Seminar on) •Pulmonary Medicine •Cardiology •Vascular Surgery •Gastroenterology and Hepatology •Hepato-Biliary-Pancreatic and Gastrointestinal Surgery •Nephrology •Thoracic Surgery •Cardiac Surgery •Urology	Elective Subjects (for four Transversal Courses)	(Advanced Seminar on) •Healthcare System •International Health Cooperation •Infectious Disease Epidemiology •Global Infectious Disease •Health Policy •Technique in Medical Education •Medical Education Specialists •Teaching Technique in Medical Simulation Education •Teaching Technique in Clinical Training

Student Payment

(Unit:Yen)

Program	Payment method		Admission fee	Class fee	Facilities maintenance fee	Instalment payment amount	Total	Four-year total
Doctoral Program in Medicine	Lump-sum payment	During admission	200,000	600,000	100,000	—	900,000	3,000,000
		During admission	200,000	300,000	50,000	550,000		
	Instalment payment	After admission (September)	—	300,000	50,000	350,000		

GRADUATE SCHOOL OF PUBLIC HEALTH (Master's Program)

Overview of Graduate School of Public Health

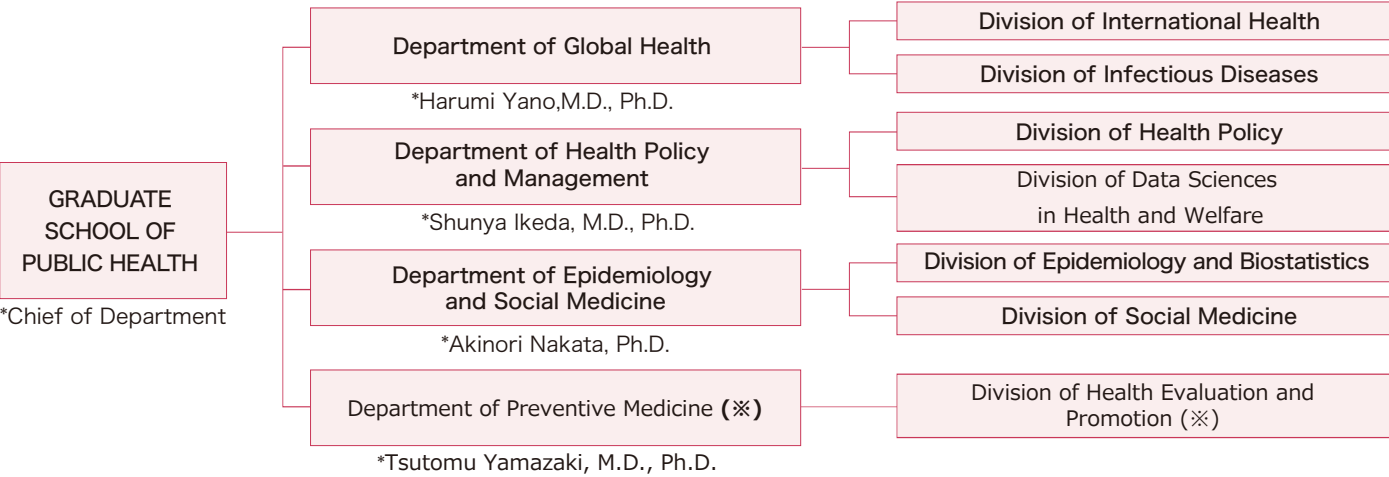
- Course : Master's Program in Public Health (2-year course)
- Admission quota : 20 persons/year
- Degree :
 - < Department of Global Health / Health Policy and Management / Epidemiology and Social Medicine > => Master of Public Health (MPH)
 - < Department of Preventive Medicine > => Master of Medical Science
- Location : Narita Campus and Tokyo Akasaka Campus



Director of IUHW Graduate School of Public Health
Shunya Ikeda, M.D., Ph.D.
[Profile] Graduate of Keio University, School of Medicine / Graduate of Harvard School of Public Health / Former Visiting Researcher, University of Pennsylvania / Former Lecturer, Keio University, School of Medicine

Students systematically study five basic subject areas in the first term of the first year, after which they select a division of interest to study further under the tutelage and guidance of our experienced teaching faculty. The Akasaka campus boasts professors with extensive expertise in various fields including health economics research, epidemiology research, and medical big data analysis. Meanwhile the Narita Campus offers opportunities to conduct joint studies on international health with other countries, and also carry out collaborative research on infectious diseases with the International Research Center for Infectious Diseases, which are also specialty areas of this program.

Graduate School of Public Health Characteristics



IUHW Graduate School of Public Health provides

- A comprehensive education of public health, by utilizing a number of experts in medicine and public health in various medical institutions and facilities of the International University of Health and Welfare Group.
- An educational curriculum based on the Council on Education for Public Health (CEPH), US certification body of School of Public Health.
- Bilingual lectures and advices in English and Japanese.
- Flexible and comprehensive educational environment for public health education and research, designed for a wide range of full-time and part-time students from physicians to specialists in healthcare and public health.

Application Requirements for the Examination of IUHW Graduate School of Public Health

Applicants must have graduated (or should be expected to graduate) from a 4-year university, or should be over the age of 22 by the time of admission and must have been approved by IUHW Graduate School application qualifications screening committee that he/she is equal to or higher than those who have graduated from 4-year universities. (Please check the application guideline for details)

Completion Requirements for Graduate School of Public Health

- Acquiring 30 credits or more (including Thesis completion), as follows:
- < Medical background >
 - Department of Global Health / Health Policy and Management / Epidemiology and Social Medicine : Required subject 24 Credits, Elective subject 6 Credits
 - Department of Preventive Medicine : Required subject 20 Credits, Elective subject 10 Credits
 - < Non-medical background >
 - Department of Global Health / Health Policy and Management / Epidemiology and Social Medicine : Required subject 26 Credits, Elective subject 4 Credits
 - Department of Preventive Medicine : Required subject 22 Credits, Elective subject 8 Credits

GRADUATE SCHOOL OF PUBLIC HEALTH (Master's Program)

Three Major Departments

- Department of Global Health**
 - Division of International Health** offers a wide-range of public health training and researches related to international health. This division develops the careers of doctors and public health specialists who can make suggestions to the public health issues at local, national and international level.
 - Division of Infectious Diseases** develops experts working as a core member of researchers of infectious diseases at various medical institutions. Students will gain specialized skills in evaluating data such as surveillance and carrying out up-to-date technologies for understanding occurrence and epidemic of infectious diseases.
- Department of Health Policy and Management**
 - Division of Health Policy** develops the critical thinking and applied problem solving skills for a wide-range of public health policies and systems.
 - Division of Data Sciences in Health and Welfare** offers knowledge and skills needed in design, collection and analysis of healthcare data that contribute to the process of policy making, strategic planning and improvement of care process.
- Department of Epidemiology and Social Medicine**
 - Division of Epidemiology and Biostatistics** equips students with knowledge and statistical skills to make valuable contributions to medical researches, which are the essential for clinical trials, epidemiology and pharmaco-epidemiology for designing medical research.
 - Division of Social Medicine** offers wide-range of public health training and researches for resolving various medical and public health issues such as maternal and child health care, elderly health, and industrial health.
- Department of Preventive Medicine** (Scheduled to open in April 2020)
 - Division of Health Evaluation and Promotion** develops leaders with advanced knowledge and skills in the practice of preventive medicine, problem-solving persons proactively involved in health screening and medical check-up, human resources who can propose the health policy, and experts facilitating health promotion in the multidisciplinary field of health behavior research.

Five basic subject areas in public health

1. Biostatistics 2. Epidemiology 3. Environmental Health 4. Health Policy and Management 5. Social Behavior Science

Acquiring the eight core competencies

- Evidence-based Approaches to Public Health
- Public Health & Health Care Systems
- Planning & Management to Promote Health
- Policy in Public Health
- Leadership
- Communication
- Inter-professional Practice
- Systems Thinking

Category	Subject Name	Category	Subject Name
Required Subjects (for every Public Health Research Field)	Introduction to Medical Ethics (※1)	Elective Subjects (applicable to each Public Health Research Field)	Overview of the Each Field of Medicine(※2)
	Introduction to Biostatistics (※1)		Introduction to Clinical Epidemiology
Required Subjects (based on each Public Health Research Field)	Introduction to Epidemiology (※1)		Introduction to Health Economics
	Introduction to Occupational Health and Environmental Health Sciences		International Organization
	Introduction to Health Services Administration		Introduction to Research Design
	Introduction to Social and Behavioral Sciences		Research Design Exercise
	Infectious Diseases and Medical Microbiology		etc.
	Introduction to International Health	※ 1 .Required subjects in Department of Preventive Medicine	
	Health and Welfare Policy	※ 2 .Required Subjects in Non-medical background	
	Topics in Epidemiology and Biostatistics		
	Topics in Social Medicine		
	Health and Welfare Data Sciences		
	Introduction to Preventive Medicine		
	Preventive Medicine Exercise		

Student Payment (Unit:Yen)

Program	Payment method		Admission fee	Class fee	Facilities maintenance fee	Instalment payment amount	Total	Two-year total
Master's Program in Public Health	Lump-sum payment	During admission	200,000	600,000	100,000	—	900,000	1,600,000
		During admission	200,000	300,000	50,000	550,000		
	Instalment payment	After admission (September)	—	300,000	50,000	350,000		