

## Scholarship for physicians advancing to the Basic Medical Fields and Social Medical Fields

Physicians (both Japanese and foreign nationals with a medical license, excluding dentists and veterinarians) advancing to the Basic Medical Fields or Social Medical Fields are eligible to receive a half scholarship (equivalent to 50% of class fees).

※The scholarship amount varies according to the annual class fees.

※The scholarship cannot be used in conjunction with the class fee reduction and exemption for self-supporting international students.

### [ Eligible Departments ]

Doctoral Program - Department of Basic Medical Sciences, Department of Social Medical Sciences

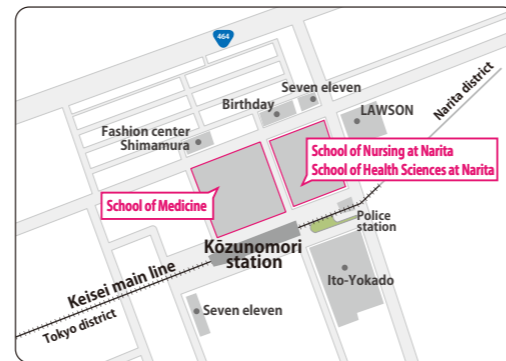
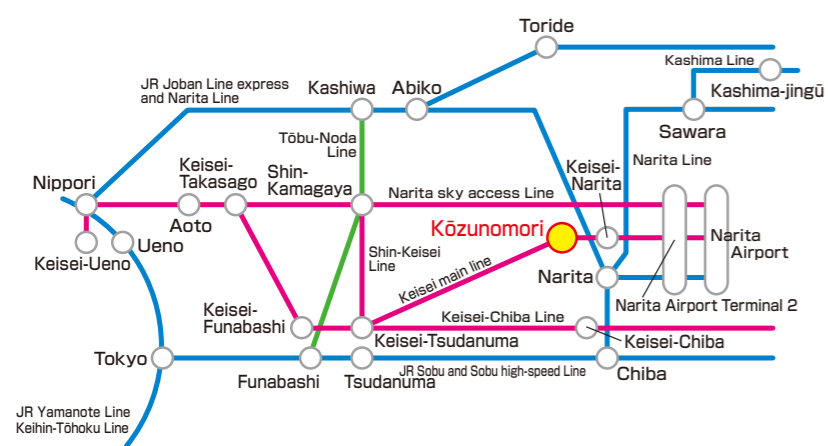
Master's Program - Department of Global Health, Department of Health Policy and Management, Department of Epidemiology and Social Medicine

### Class fee reduction and exemption for self-supporting international students

Self-supporting international students who will be able to acquire an international student visa status by the time of admission may be eligible for a reduction in class fees (30%) for economic reasons that make it difficult for him/her to make full payment of the fees. Please refer to the application guidelines for information on application conditions for the class fee reduction and exemption.

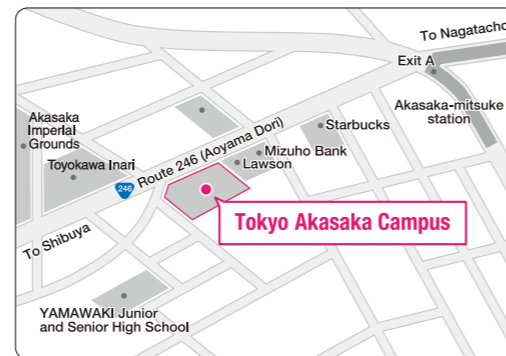
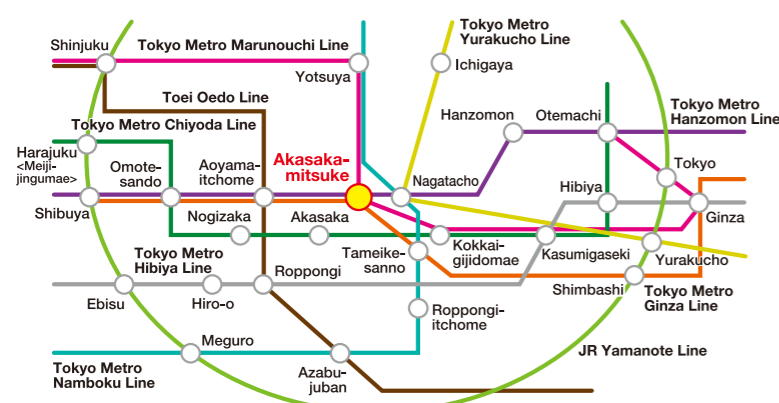
**Narita Campus** 4-3 Kozunomori, Narita City, Chiba 286-8686

One minute walk from the Keisei Main Line 「Kozunomori」station.



**Tokyo Akasaka Campus** 4-1-26 Akasaka, Minato Ward, Tokyo 107-8402

Three minutes walk from the 'A' exit of Tokyo Metro 「Akasakamitsuke」 station.



### Admission consultation desk

IUHW Admission Section  
Otawara Campus  
2600-1 Kita Kanemaru, Otawara City, Tochigi 324-8501  
E-mail : nyushi@iuhw.ac.jp

### Graduate school inquiries desk

IUHW Graduate School, Tokyo Akasaka Campus  
4-1-26 Akasaka, Minato-ku, Tokyo 107-8402, Japan  
E-mail : tokyo.s.c@iuhw.ac.jp

## INTERNATIONAL UNIVERSITY OF HEALTH AND WELFARE (IUHW) GRADUATE SCHOOL

## IUHW GRADUATE SCHOOL OF MEDICINE

Doctoral Program in Medicine (4-year course)

## IUHW GRADUATE SCHOOL OF PUBLIC HEALTH

Master's Program in Public Health (2-year course)

### 2019 GUIDEBOOK



Narita Campus



Tokyo Akasaka Campus

E-mail : [nyushi@iuhw.ac.jp](mailto:nyushi@iuhw.ac.jp)

URL : <http://www.iuhw.ac.jp/daigakuin/>



INTERNATIONAL  
UNIVERSITY OF  
HEALTH AND WELFARE



**Soichiro Miura, M.D., Ph.D.**  
Dean, IUHW Graduate School

[Profile]  
Graduate of Keio University, School of Medicine, Ph.D. in Medical Science / Former President, National Defense Medical College / Honorary Professor, National Defense Medical College / Visiting Professor, Keio University, School of Medicine / Dean, IUHW Graduate School (since June 2017)

## Message from the Dean

IUHW Graduate School was founded in 1999, with the aim of nurturing advanced medical professionals who can become leaders in the fields of health and welfare in Japan. In April 2018 inaugurated a Graduate School of Medicine and Public Health to foster competent personnel capable of further developing medical sciences through collaborations with the IUHW School of Medicine. We will play pivotal roles as an international center for medical exchanges, and provide an even better environment for educational and research activities.

Along with many opportunities to acquire extensive and in-depth knowledge and master academic theory and its application, we will provide more convenient learning system that utilizes information technology, enabling remote access for many working students. Our aim is for the IUHW to be a part of shaping and transforming Japan's future by focusing on the areas with potential for even further development, such as genomics and cancer medicine, international infectious diseases, remote image diagnosis, medical education, health and welfare services management and global health. We will continue to carry out comprehensive education and research activities to facilitate ongoing innovation. We are looking forward to your admission into the IUHW Graduate School of Medicine and Public Health.

## IUHW Graduate School Organization Chart

### Graduate School of Medicine

Doctoral Program in Medicine (4-year course)

### Graduate School of Health and Welfare Sciences

Doctoral and Master's Program

### Graduate School of Public Health

Master's Program in Public Health (2-year course)

### Graduate School of Pharmacy

Doctoral Program

### Graduate School of Pharmaceutical Sciences

Master's Program

## IUHW Graduate School offers an excellent environment for working students to continue their education as a graduate student.

### Curriculum

Around 90% of our students are working students who attend many weekday evening classes and Saturday classes.



### Simultaneous and two-way remote classes

Students can attend classes in remote areas in real time using teleconference facilities.



### E-learning system

Internet-based learning allows students to study anytime and anywhere.



## The IUHW Narita Hospital will be opened near Narita International Airport in 2020

The IUHW Narita hospital with international features will be opened in Narita City with 642 beds on 91,000 square meters architectural area, close to Narita International Airport and the IUHW Narita campus. The new hospital will cater to the needs of global medicine with a range of facilities with advanced medical technology, including an International Remote Image Diagnosis Center, International Research Center of Infectious Diseases, and Genomic Medicine Research Center. We will provide multilingual service to become a hub institute for world-class medical center.



## The IUHW Group has various medical and welfare facilities

### Affiliated University Hospitals



IUHW Hospital (Main Hospital)



IUHW Mita Hospital



IUHW Ichikawa Hospital



IUHW Atami Hospital



IUHW Shioya Hospital

### Affiliated Medical Facilities



Sanno Hospital/  
Sanno Birth Center



Fukuoka Sanno Hospital



Takagi Hospital



Yanagawa Rehabilitation  
Hospital

# GRADUATE SCHOOL OF MEDICINE (Doctoral Program)

## Overview of Graduate School of Medicine

- Course : Doctoral Program in Medicine (4-year course)
- Admission quota : 20 persons/year
- Degree : Doctor of Philosophy (Ph.D.) in Medical Science
- Location : Narita Campus, Tokyo Akasaka Campus, Otawara Campus, Fukuoka Campus and Okawa Campus



**Director of the IUHW Graduate School of Medicine**  
**Shoji Tsuji, M.D., Ph.D.**

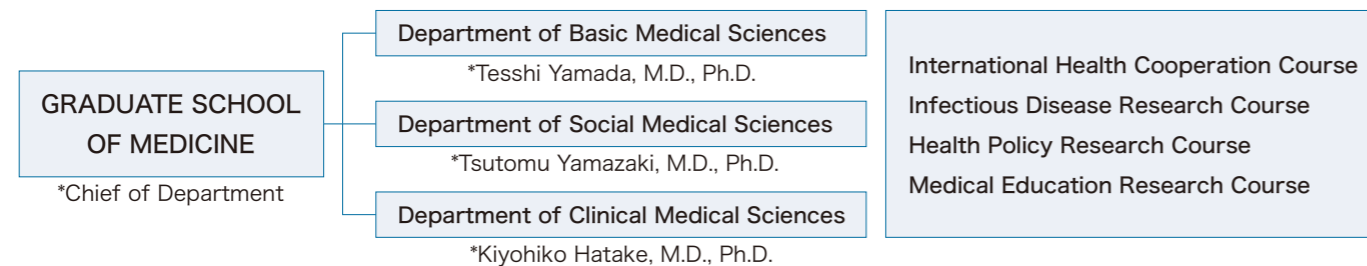
[Profile] Graduate of Faculty of Medicine, The University of Tokyo / Former Chairman of the Department of Neurology, Graduate School of Medicine / The University of Tokyo, Former Director of the Medical Genome Research Initiative, The University of Tokyo / Emeritus Professor, The University of Tokyo / Associate Member, The Science Council of Japan

IUHW Graduate School of Medicine provides comprehensive education programs aiming to nurture scientists, medical specialists, and professionals who will actively participate in broad international medical fields. The applicants need to select one of the three Departments including Department of Basic Medical Sciences, Department of Social Medical Sciences and Department of Clinical Medical Sciences, consulting to the supervisor teachers in advance. English proficiency will be cultivated through the education programs. Furthermore, students may take the optional courses including International Health Cooperation Course, Infectious Disease Research Course, Health Policy Research Course and Medical Education Research Course, and certificates will be issued upon completion of the course.

## Graduate School of Medicine Characteristics

### Three Major Departments (Research Fields):

Every graduate student must belong to a laboratory to do research and course works in either of below-listed departments:



### Four elective courses of transversal subjects:

Some graduate students may be able to learn additionally in the below-listed courses regardless of the department to belong to:

### IUHW Graduate School of Medicine

- Fosters highly skilled and knowledgeable medical professionals with an international mindset and leadership qualities.
- Functions as a comprehensive university medical research center (knowledge hub) for conducting cutting-edge research required in society.
- Nurtures excellent researchers and professionals who can work internationally and contribute to furthering medical education.
- Conducts international medical research and enhancement of English proficiency backed by academic exchanges with other countries.
- Develops medical equipments and devices for medical education to further enhance the skills of international medical professionals.

# GRADUATE SCHOOL OF MEDICINE (Doctoral Program)

## Curriculum and Features

Three main departments (research fields) and four elective and transversal courses designed to develop researchers capable of working internationally.

### ⟨ Department of Basic Medical Sciences ⟩

Teaching staff with a wealth of experience abroad and in clinical settings will guide students to become international researchers who can conduct translational research for scientifically elucidating issues in medical practice.

### ⟨ Department of Social Medical Sciences ⟩

Students will be trained as researchers with skills for improving health in the international society and local community, enhancing health and welfare services, and advancing medical education, with a focus on acquiring required techniques such as statistics and medical informatics from the perspective of preventive medicine and public health.

### ⟨ Department of Clinical Medical Sciences ⟩

Students will acquire the skills and knowledge to become advanced clinical researchers utilizing novel technologies such as regenerative medicine and genetic cellular engineering and new findings in cellular biology, molecular biology and other areas to further advance clinical research in Japan and overseas.

### ● Four interesting, elective and transversal courses

⟨ International Health Cooperation Course ⟩ ⟨ Infectious Disease Research Course ⟩ ⟨ Health Policy Research Course ⟩ ⟨ Medical Education Research Course ⟩ Students who complete a course elective subjects will receive a Certificate of Completion.

Category	Subject Name	Category	Subject Name
Required Subjects	Advanced Seminar on Medical Research (In addition to required "Research Ethics", transversal topics will be selected based on students' needs)	Elective Subjects (for Clinical Medical Sciences) cont'd	•Diabetes, Metabolism and Endocrinology
	•Collection and writing of Academic Manuscript		•Obstetrics and Gynecology
Elective Subjects (for Basic Medical Sciences)	•Exercise for Biomedical Statistics	Elective Subjects (for four Transversal Courses)	•Pediatrics
	•Presentation of Outcome of Research		•Orthopedic Surgery
Elective Subjects (for Social Medical Sciences)	•Exercise for Research Language	Elective Subjects (for four Transversal Courses)	•Rheumatology
	•Introduction to Medical Research		•Plastic and Reconstructive Surgery
Elective Subjects (for Clinical Medical Sciences)	Special Training for Medical Research (Required subject based on each Medical Research Field)	Elective Subjects (for four Transversal Courses)	•Neurology
	(Advanced Seminar on)		•Neurosurgery
Elective Subjects (for Clinical Medical Sciences)	•Physiology	Elective Subjects (for four Transversal Courses)	•Ophthalmology
	•Biochemistry		•Otorhinolaryngology
Elective Subjects (for Clinical Medical Sciences)	•Pharmacology	Elective Subjects (for four Transversal Courses)	•Hematology
	•Molecular Biology		•Clinical Oncology
Elective Subjects (for Clinical Medical Sciences)	•Pathology	Elective Subjects (for four Transversal Courses)	•General Medicine
	(Advanced Seminar on)		•Psychosomatic Internal Medicine
Elective Subjects (for Clinical Medical Sciences)	•Forensic Medicine	Elective Subjects (for four Transversal Courses)	•Geriatric Medicine
	•Infectious Disease Medicine		•Anesthesiology and Intensive Care Medicine
Elective Subjects (for Clinical Medical Sciences)	•Public Health	Elective Subjects (for four Transversal Courses)	•Emergency Medicine
	•Medical Education		•Radiology
Elective Subjects (for Clinical Medical Sciences)	(Advanced Seminar on)	Elective Subjects (for four Transversal Courses)	•Clinical Laboratory Medicine
	•Pulmonary Medicine		(Advanced Seminar on)
Elective Subjects (for Clinical Medical Sciences)	•Cardiology	Elective Subjects (for four Transversal Courses)	•Healthcare System
	•Vascular Surgery		•International Health Cooperation
Elective Subjects (for Clinical Medical Sciences)	•Gastroenterology and Hepatology	Elective Subjects (for four Transversal Courses)	•Infectious Disease Epidemiology
	•Hepato-Biliary-Pancreatic and Gastrointestinal Surgery		•Global Infectious Disease
Elective Subjects (for Clinical Medical Sciences)	•Nephrology	Elective Subjects (for four Transversal Courses)	•Health Policy
	•Urology		•Technique in Medical Education
Elective Subjects (for Clinical Medical Sciences)		Elective Subjects (for four Transversal Courses)	•Medical Education Specialists
			•Teaching Technique in Medical Simulation Education
Elective Subjects (for Clinical Medical Sciences)		Elective Subjects (for four Transversal Courses)	•Teaching Technique in Clinical Training

## Student Payment

(Unit: Yen)

Program	Payment method		Admission fee	Class fee	Facilities maintenance fee	Instalment payment amount	Total	Four-year total
Doctoral Program in Medicine	Lump-sum payment	During admission	200,000	600,000	100,000	—	900,000	3,000,000
	Instalment payment	During admission	200,000	300,000	50,000	550,000		
		After admission (September)	—	300,000	50,000	350,000		

## Requirements for completing the Doctoral Program in Medicine

Acquiring 30 credits or more, as follows:

- ① Required subject (specialized subject: 20 credits and Thesis completion)  
(Advanced Seminar on Medical Research: 2 credits and Special Training for Medical Research: 18 credits)
- ② Elective subject (10 credits or more)

# GRADUATE SCHOOL OF PUBLIC HEALTH (Master's Program)

## Overview of Graduate School of Public Health

- Course : Master's Program in (2-year course)
- Admission quota : 10 persons/year
- Degree : Master of Public Health (MPH)
- Location : Narita Campus and Tokyo Akasaka Campus

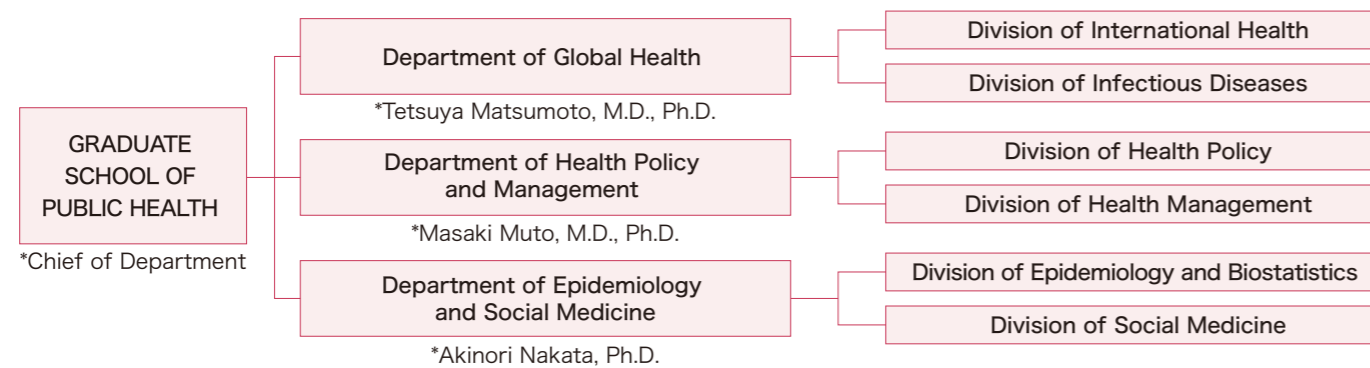


Director of IUHW Graduate School of Public Health  
**Shunya Ikeda, M.D., Ph.D.**

[Profile] Graduate of Keio University, School of Medicine / Graduate of Harvard School of Public Health / Former Visiting Researcher, University of Pennsylvania / Former Lecturer, Keio University, School of Medicine

Students systematically study five basic subject areas in the first term of the first year, after which they select a division of interest to study further under the tutelage and guidance of our experienced teaching faculty. The Akasaka campus boasts professors with extensive expertise in various fields including health economics research, epidemiology research, and medical big data analysis. Meanwhile the Narita Campus offers opportunities to conduct joint studies on international health with other countries, and also carry out collaborative research on infectious diseases with the International Research Center for Infectious Diseases, which are also specialty areas of this program.

## Graduate School of Public Health Characteristics



### IUHW Graduate School of Public Health provides

- A comprehensive education of public health, by utilizing a number of experts in medicine and public health in various medical institutions and facilities of the International University of Health and Welfare Group.
- An educational curriculum based on the Council on Education for Public Health (CEPH), US certification body of School of Public Health.
- Bilingual lectures and advices in English and Japanese.
- Flexible and comprehensive educational environment for public health education and research, designed for a wide range of full-time and part-time students from physicians to specialists in healthcare and public health.

## Application Requirements for the Examination of IUHW Graduate School of Public Health

- Applicants must have graduated (or should be expected to graduate) from a 4-year university, or should be over the age of 22 by the time of admission and must have been approved by IUHW Graduate School application qualifications screening committee that he/she is equal to or higher than those who have graduated from 4-year universities. (Please check the application guideline for details)

## Completion Requirements for Graduate School of Public Health

Acquiring 42 credits or more (including Thesis completion), as follows:

Medical background: Required subject 26 Credits, Elective subject: 16 Credits

Non-medical background: Required subject: 30 Credits, Elective subject: 12 Credits (Students must take the Introduction to Medicine class)

# GRADUATE SCHOOL OF PUBLIC HEALTH (Master's Program)

## Three Major Departments

### 1. Department of Global Health

- ◇ **Division of International Health** offers a wide-range of public health training and researches related to international health. This division develops the careers of doctors and public health specialists who can make suggestions to the public health issues at local, national and international level.
- ◇ **Division of Infectious Diseases** develops experts working as a core member of researchers of infectious diseases at various medical institutions. Students will gain specialized skills in evaluating data such as surveillance and carrying out up-to-date technologies for understanding occurrence and epidemic of infectious diseases.

### 2. Department of Health Policy and Management

- ◇ **Division of Health Policy** develops the critical thinking and applied problem solving skills for a wide-range of public health policies and systems.
- ◇ **Division of Health Management** offers essential management skills required in the health sector. Students will gain deep knowledge of key stakeholders within health systems with understandings of the strategic, political and ethical dimensions of health care sectors.

### 3. Department of Epidemiology and Social Medicine

- ◇ **Division of Epidemiology and Biostatistics** equips students with knowledge and statistical skills to make valuable contributions to medical researches, which are the essential for clinical trials, epidemiology and pharmaco-epidemiology for designing medical research.
- ◇ **Division of Social Medicine** offers wide-range of public health training and researches for resolving various medical and public health issues such as maternal and child health care, elderly health, and industrial health.

### Five basic subject areas in public health

1. Biostatistics
2. Epidemiology
3. Environmental Health
4. Health Policy and Management
5. Social Behavior Science

### Acquiring the eight core competencies

1. Evidence-based Approaches to Public Health
2. Public Health & Health Care Systems
3. Planning & Management to Promote Health
4. Policy in Public Health
5. Leadership
6. Communication
7. Inter-professional Practice
8. Systems Thinking

Category	Subject Name	Category	Subject Name
Required Subjects (for every Public Health Research Field)	Introduction to Biostatistics	Elective Subjects (applicable to each Public Health Research Field)	International Organization
	Introduction to Epidemiology		Occupational Health
	Introduction to Health Services Administration		Introduction to Clinical Epidemiology
	Introduction to Environmental Health Sciences		Topics in Clinical Epidemiology
	Introduction to Social and Behavioral Sciences		Introduction to Health Economics
Introduction to Medical Ethics	Quality and Risk Management in Healthcare		
Required Subjects (based on each Public Health Research Field)	Overview of the Each Field of Medicine I		Taxation on Health and Welfare
	Overview of the Each Field of Medicine II		Financial Accounting
	Introduction to International Health		Management Accounting
	Topics in International Health		Medical Law and Ethics
	Infectious Diseases and Medical Microbiology		Healthcare Marketing
	International Aspects of Infectious Diseases		Medical Strategic Management
	Introduction to Health and Welfare Policy		Medical Anthropology
	Topics in Health and Welfare Policy		Introduction to Clinical Psychology
	Introduction to Healthcare Management		Introduction to Research Design
	Topics in Health and Welfare Management	Research Design Exercise	
	Topics in Biostatistics	Introduction to Qualitative Research Methods	
	Topics in Epidemiology	Introduction to Psychology Research Methods	
	Topics in Social and Behavioral Sciences	Introduction to Healthcare Information Systems	
	Topics in Social Medicine		

## Student Payment

(Unit: Yen)

Program	Payment method		Admission fee	Class fee	Facilities maintenance fee	Instalment payment amount	Total	Two-year total
Master's Program in Public Health	Lump-sum payment	During admission	200,000	600,000	100,000	—	900,000	1,600,000
		During admission	200,000	300,000	50,000	550,000		
	Instalment payment	After admission (September)	—	300,000	50,000	350,000		